

**LABOUR MOBILITY**

AUSTRALIA

EMBARGO: 11.30AM (CANBERRA TIME) THURS 6 DEC 2007

C O N T E N T S

	<i>page</i>
Notes	2
Conceptual framework	3
Summary of findings	4

T A B L E S

List of tables	8
Persons who were working at February — 2002, 2004 and 2006	10
Persons who were working at February 2006	12
Persons who worked at some time during the year ending February 2006	22
Persons who ceased a job during the year ending February 2006	30
Populations	32

A D D I T I O N A L I N F O R M A T I O N

Explanatory Notes	35
Appendix 1: Populations and data items list	38
Appendix 2: Supplementary surveys	45
Technical Note: Data quality	46
Glossary	49

I N Q U I R I E S

For further information about these and related statistics, contact the National Information and Referral Service on 1300 135 070 or Labour Market Section on Canberra (02) 6252 7206.

NOTES

ABOUT THIS PUBLICATION

This publication presents information about people aged 15 years and over who worked at some time during the year ending February 2006.

The statistics in this publication were compiled from the Labour Mobility survey, conducted throughout Australia in February 2006 as a supplement to the Australian Bureau of Statistics (ABS) monthly Labour Force Survey (LFS).

This survey provides information about people who, within the 12 months to February 2006, either had a change of employer/business in their main job, or had some change in work with their current employer/business for whom they had worked for one year or more.

NOTES ABOUT THE ESTIMATES

The scope of the Labour Mobility survey was expanded in February 2006 to include all people aged 15 years and over. All results in this publication relate to all people aged 15 years and over, unless otherwise specified. This change has resulted in an extra 73,300 people coming within the scope of this survey. Users need to exercise care when comparing the estimates in this publication with previous releases.

New data items have been introduced into the 2006 survey to provide information on people who had worked with their current employer/business for one year or more, and had changes in the work undertaken with their current employer/business in the last 12 months. These data items include whether promoted or transferred, whether changed usual hours worked and whether changed occupation.

Data items that referred to locality, which were included in previous Labour Mobility publications, are not presented in this publication as the information was not collected in the February 2006 survey.

ROUNDING

As estimates have been rounded, discrepancies may occur between sums of the component items and totals.



ABBREVIATIONS

ABS	Australian Bureau of Statistics
ANZSIC	Australian and New Zealand Standard Industrial Classification
ASCED	Australian Standard Classification of Education
ASCO	Australian Standard Classification of Occupations
CAI	computer assisted interviewing
LFS	Labour Force Survey
OMIE	owner manager of incorporated enterprise
RSE	relative standard error
SACC	Standard Australian Classification of Countries
SE	standard error

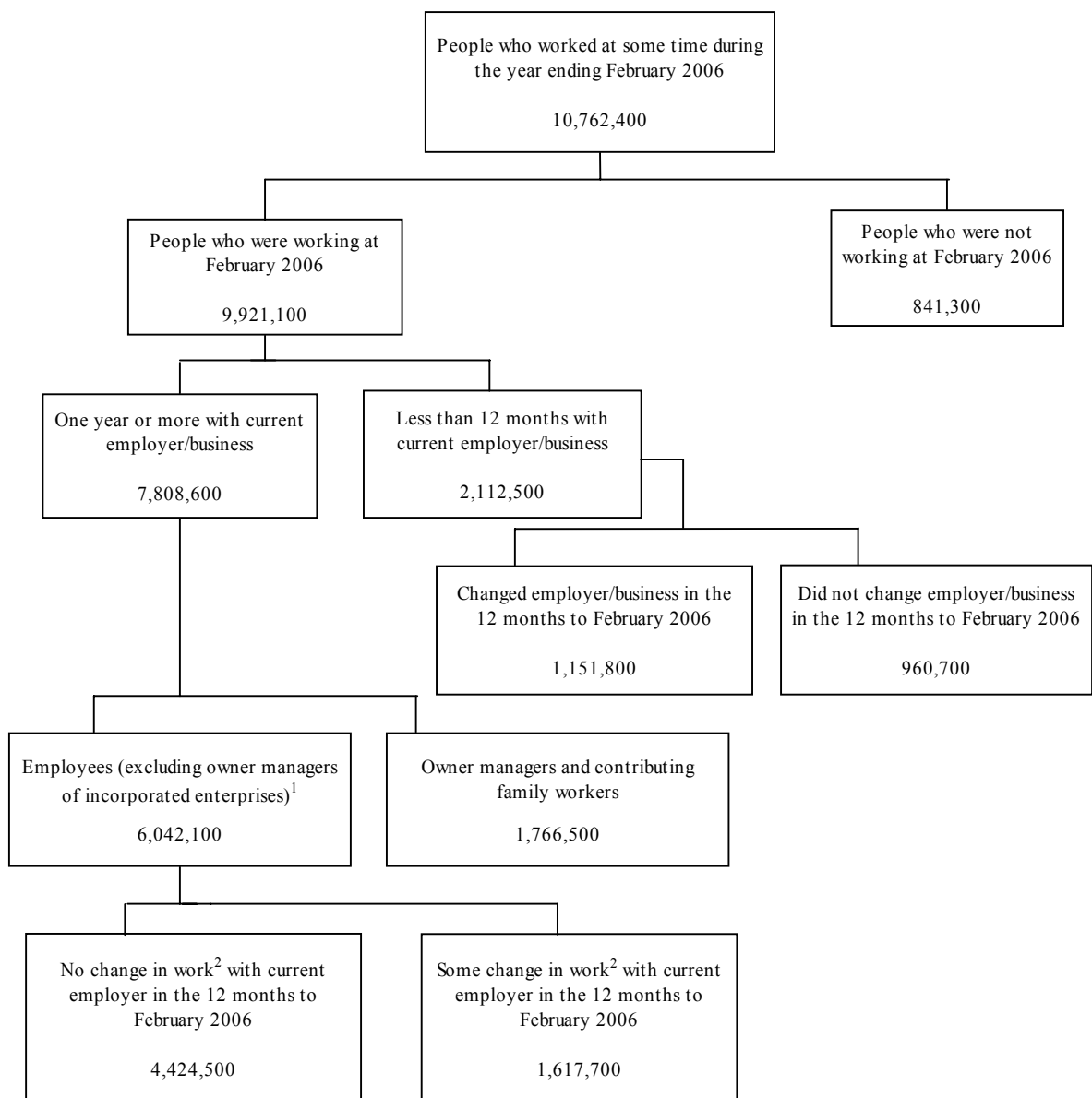
Brian Pink
Australian Statistician

CONCEPTUAL FRAMEWORK

LABOUR MOBILITY

The following diagram illustrates the conceptual framework for the 2006 Labour Mobility survey. People aged 15 years and over were classified according to the duration of their employment with their employer/business at February 2006.

People who had worked with their employer/business at February 2006 for one year or more were asked whether, in the 12 months to February 2006, they had changed the number of usual hours worked. Employees (excluding owner managers of incorporated enterprises)¹ were also asked whether they had been promoted, transferred to a different position, or changed occupation in the 12 months to February 2006. Employees who reported any of these changes were considered to have had some change in work² in the 12 months to February 2006.



END NOTES

1. Refer to the Glossary under 'Employment type'.

2. Either promoted, transferred to a different position, changed usual hours worked or changed occupation. Refer to the Glossary for the definition of 'Change in work'.

SUMMARY OF FINDINGS

OVERVIEW

An estimated 10.8 million people aged 15 years and over had worked at some time during the year ending February 2006. At February 2006, 73% had been with their current employer/business for one year or more, 20% had been with their current employer/business for less than 12 months and 8% were not employed.

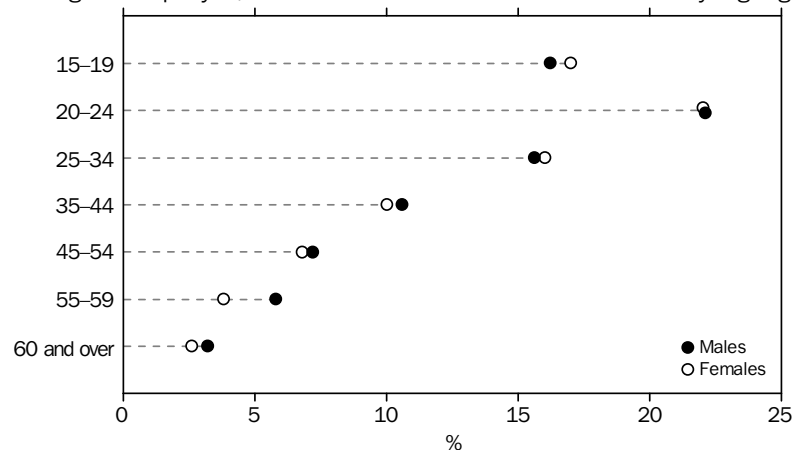
CHANGE OF EMPLOYER/BUSINESS

Of the 9.9 million people aged 15 years and over who were working at February 2006, 11.6% had changed their employer/business in their main job in the last 12 months.

Of the 1.2 million people who had changed employer/business in their main job in the 12 months to February 2006:

- 24% had two or more changes of employer/business
- 55% changed industry
- 44% changed occupation
- 75% changed usual hours worked
- 37% changed employment type¹.

PERSONS WHO WERE WORKING AT FEBRUARY 2006, Proportion who changed employer/business in the last 12 months—By age groups



Of the people who were working at February 2006, those in younger age groups tended to change their employer/business more than people in older age groups. For example, of the 20–24 year olds who were working at February 2006, 22% had changed their employer/business. This compares to 4.9% of those aged 55–59 and 3% of those aged 60 years and over.

COMPARISONS WITH PREVIOUS SURVEYS

Prior to 2006 the scope of the Labour Mobility survey was restricted to people aged 15 to 69 years so direct comparisons between 2006 and previous years can only be made using this common population.

Of the 9.9 million people who were working at February 2006 and aged 15–69 years, 11.7% had changed their employer/business in their main job in the 12 months to February 2006, which was similar to previous years (11.3% in February 2004 and 11.5% in February 2002).

The percentage of people aged 15 to 69 years who had been working with their current employer/business for less than 12 months increased from 19.9% in 2002 to 20.1% in 2004 and 21.4% in 2006.

SUMMARY OF FINDINGS *continued*

CHANGE IN WORK

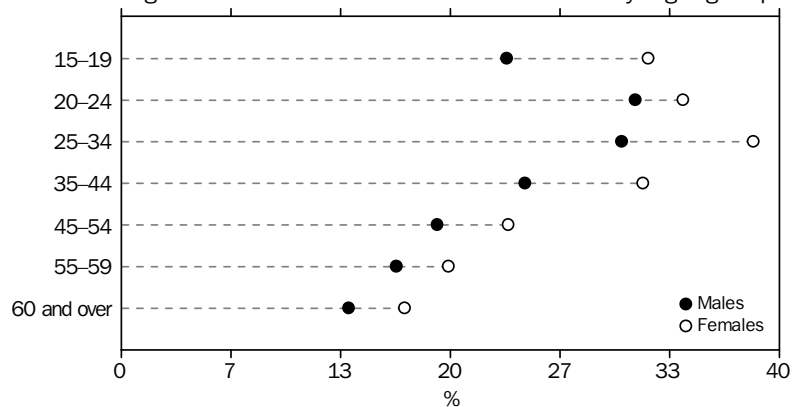
There were 6 million employees, excluding owner managers of incorporated enterprises (OMIEs)¹, who had been with their current employer for one year or more. Of these, in the last 12 months:

- 5.8% had changed occupation
- 13% had changed usual hours worked
- 12% were promoted
- 11% had transferred to a different position.

There were 1.6 million employees (excluding OMIEs) who had been with their current employer for one year or more and had some change in work² in the 12 months to February 2006. Of these, at February 2006:

- 29% were aged between 25–34 years
- 22% had a Bachelor Degree
- 25% were Professionals
- 15% were working in the Retail trade industry.

EMPLOYEES (a) WHO HAD BEEN WITH THEIR CURRENT EMPLOYER/BUSINESS FOR 12 MONTHS OR MORE, Proportion who had some change in work² in the last 12 months—By age groups



(a) Excludes OMIEs.

Of employees (excluding OMIEs)¹ who had been with their employer at February 2006 for one year or more, those in the 25–34 year age group were most likely to have had some change in work² in the last 12 months (30% of men and 38% of women). Across all age groups, the proportion of females who had some change in work² was higher than their male counterparts.

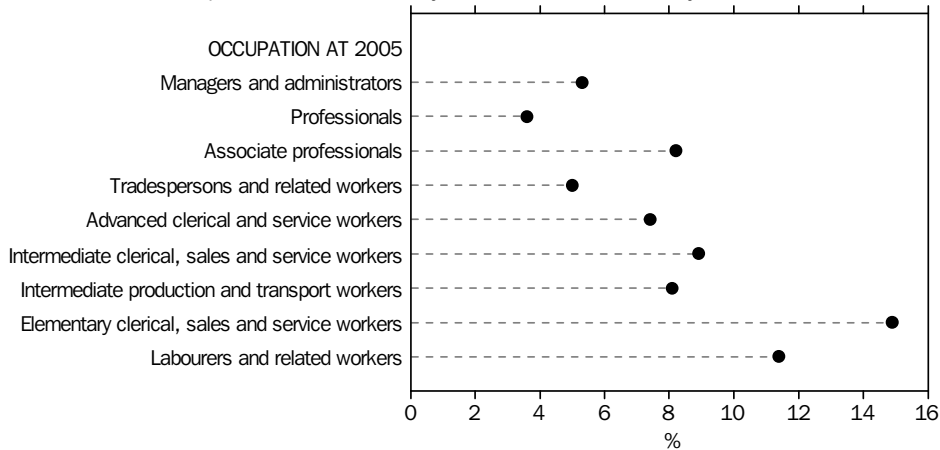
SUMMARY OF FINDINGS *continued*

WORKING AT FEBRUARY 2005 AND 2006

There were 9 million people who were working at February 2005 and February 2006. Of these:

- 89% had the same employer/business at February 2005 and February 2006
- 11% had a different employer/business at February 2005 and February 2006.

PERSONS WHO WERE WORKING AT FEBRUARY 2005 AND AT FEBRUARY 2006, Proportion who had a different occupation at February 2005 and February 2006



Of those people who were working at February 2005 and February 2006, people who were Elementary clerical, sales and service workers at February 2005 were most likely to have a different occupation at February 2006 (15%) followed by Labourers and related workers (11%); whereas Tradespersons and related workers (5%) and Professionals (3.6%) were least likely.

Of the 120,700 Elementary clerical, sales and service workers who had a different occupation at February 2005 and February 2006, 39% became Intermediate clerical, sales and service workers, and 15% Associate professionals.

DURATION WITH EMPLOYER/BUSINESS AT FEBRUARY 2006

In February 2006 there were 2.1 million people who were currently working, and had been with their current employer/business for less than 12 months. Of these:

- 55% had a previous employer/business in their main job in the 12 months to February 2006
- a higher proportion of men than women had changed their employment type¹ (23% compared to 18%).

The industry groups in which the highest proportions of people had worked with their employer/business at February 2006 for less than 12 months were:

- Accommodation, cafes and restaurants (38%)
- Retail trade (28%)
- Mining (28%)
- Communication services (26%).

SUMMARY OF FINDINGS *continued*

DURATION WITH EMPLOYER/BUSINESS AT FEBRUARY 2006 *continued*

There were 2.5 million people who were working at February 2006 and had been with their current employer/business for 10 years or more. A greater proportion of men than women had been with their current employer/business for 10 years or more (28% compared with 22%). The industry groups in which people were most likely to have worked for 10 years or more were Agriculture, forestry and fishing (51%), Electricity, gas and water supply (42%), Education (38%) and Government administration and defence (35%).

PERSONS WHO CEASED A JOB DURING THE LAST 12 MONTHS

Of the 10.8 million people who had worked at some time during the year ending February 2006, 19% had ceased a job. Of these, 68% were job leavers (people who ceased their last job voluntarily) and 32% were job losers (people who ceased their last job involuntarily). Of the 641,700 job losers, 59% had been in that job for less than 12 months, and a further 12% had worked in that job for between one and two years. The remaining 29% had worked in that job for two years or more. The main reason for ceasing a job involuntarily was 'Job was temporary or seasonal' (50%).

END NOTES

1. Refer to the Glossary under 'Employment type'.
2. Refer to the Glossary for the definition of 'Change in work'.

LIST OF TABLES

page

PERSONS WHO WERE WORKING AT FEBRUARY AND AGED 15 TO 69 YEARS

- 1** Duration with current employer/business, by whether changed employer/business during the last 12 months, whether changed industry (last to current employer/business) and whether changed occupation (last to current employer/business), by sex, 2002 to 2006 10
- 2** Duration with current employer/business, by sex, 2002 to 2006 11

PERSONS WHO WERE WORKING AT FEBRUARY 2006

- 3** Duration with employer/business at February 2006, by whether changed employer/business in the last 12 months, by whether changed industry (last to current employer/business), whether changed occupation (last to current employer/business), whether changed usual hours worked (last to current employer/business), whether changed employment type (last to current employer/business), whether changed occupation, whether changed usual hours worked, whether promoted or transferred, and owner managers, by sex 12
- 4** Occupation at February 2006, by duration with employer/business at February 2006, by sex 13
- 5** Industry at February 2006, by duration with employer/business at February 2006, by sex 14
- 6** Employment type at February 2006, occupation at February 2006, industry at February 2006, and usual hours worked at February 2006, by changes in employer/business or work, by sex 16

PERSONS WHO WORKED AT SOME TIME DURING THE YEAR ENDING FEBRUARY 2006

- 7** Age group, marital status, relationship in household, country of birth, and level of highest non-school qualification, by changes in employer/business or work, by sex 22
- 8** Labour force status at February 2006 and occupation at February 2006, by occupation at February 2005 25
- 9** Duration with employer/business at February 2006, by whether changed employer/business in the last 12 months, whether changed industry, whether changed occupation, whether changed usual hours worked, whether changed employment type, whether promoted or transferred, and owner managers, by occupation at February 2005 27
- 10** Whether working at February 2005 by industry at February 2005, by whether working at February 2006, duration with employer/business at February 2006 and whether changed industry (February 2005 to February 2006) 29

PERSONS WHO CEASED A JOB DURING THE YEAR ENDING FEBRUARY 2006

- 11** Involuntarily: duration of last job, by main reason for ceasing last job, by sex 30
- 12** Voluntarily: duration of last job, by main reason for ceasing last job, by sex 31

LIST OF TABLES *continued*

page

POPULATIONS

13 State or territory of usual residence, by sex 32

PERSONS WHO WERE WORKING AT FEBRUARY AND AGED 15 TO 69 YEARS(a), Changes in employer/business—2002 to 2006

	2002	2004	2006	2002	2004	2006
	'000	'000	'000	%	%	%
MALES						
Less than 12 months with current employer/business	941.5	994.9	1 089.7	18.6	19.1	20.1
Changed employer/business in the last 12 months	575.3	607.3	634.6	11.4	11.7	11.7
Whether changed industry (last to current employer/business)(b)						
Same industry	277.3	305.4	294.6	5.5	5.9	5.4
Changed industry	298.0	301.9	340.0	5.9	5.8	6.3
Whether changed occupation (last to current employer/business)(c)						
Same occupation	338.5	355.0	361.8	6.7	6.8	6.7
Changed occupation	236.8	252.3	272.7	4.7	4.8	5.0
Did not change employer/business in the last 12 months	366.3	387.5	455.1	7.2	7.4	8.4
One year or more with current employer/business	4 114.5	4 218.0	4 344.9	81.4	80.9	79.9
Total	5 056.1	5 212.8	5 434.6	100.0	100.0	100.0
FEMALES						
Less than 12 months with current employer/business	858.0	882.6	1 020.7	21.4	21.3	23.1
Changed employer/business in the last 12 months	470.1	446.4	517.3	11.7	10.8	11.7
Whether changed industry (last to current employer/business)(b)						
Same industry	224.6	203.9	225.8	5.6	4.9	5.1
Changed industry	245.5	242.5	291.4	6.1	5.8	6.6
Whether changed occupation (last to current employer/business)(c)						
Same occupation	282.6	256.8	286.7	7.0	6.2	6.5
Changed occupation	187.5	189.6	230.6	4.7	4.6	5.2
Did not change employer/business in the last 12 months	387.9	436.2	503.4	9.7	10.5	11.4
One year or more with current employer/business	3 146.7	3 264.6	3 403.6	78.6	78.7	76.9
Total	4 004.6	4 147.2	4 424.2	100.0	100.0	100.0
PERSONS						
Less than 12 months with current employer/business	1 799.5	1 877.5	2 110.4	19.9	20.1	21.4
Changed employer/business in the last 12 months	1 045.4	1 053.7	1 151.8	11.5	11.3	11.7
Whether changed industry (last to current employer/business)(b)						
Same industry	501.9	509.3	520.4	5.5	5.4	5.3
Changed industry	543.5	544.4	631.4	6.0	5.8	6.4
Whether changed occupation (last to current employer/business)(c)						
Same occupation	621.1	611.8	648.5	6.9	6.5	6.6
Changed occupation	424.3	441.9	503.3	4.7	4.7	5.1
Did not change employer/business in the last 12 months	754.1	823.8	958.5	8.3	8.8	9.7
One year or more with current employer/business	7 261.2	7 482.6	7 748.5	80.1	80.0	78.6
Total	9 060.7	9 360.0	9 858.8	100.0	100.0	100.0

(a) See paragraphs 17–18 of the Explanatory Notes for more information.

(b) A change in industry was defined as any change between industry Divisions (ANZSIC).

(c) A change in occupation was defined as any change between Major occupation groups (ASCO).

PERSONS WHO WERE WORKING AT FEBRUARY AND AGED 15 TO 69 YEARS(a), Duration with current employer/business—2002 to 2006

	2002	2004	2006	2002	2004	2006
	'000	'000	'000	%	%	%
MALES						
Under 12 months	941.5	994.9	1 089.7	18.6	19.1	20.1
Under 3 months	302.6	332.4	344.6	6.0	6.4	6.3
3 and under 6 months	262.6	280.6	308.7	5.2	5.4	5.7
6 and under 12 months	376.3	381.8	436.4	7.4	7.3	8.0
1 and under 2 years	567.3	591.1	616.0	11.2	11.3	11.3
2 and under 3 years	537.1	505.8	558.1	10.6	9.7	10.3
3 and under 5 years	718.3	781.8	738.8	14.2	15.0	13.6
5 and under 10 years	892.8	920.0	957.5	17.7	17.6	17.6
10 and under 20 years	836.2	831.1	879.8	16.5	15.9	16.2
20 years and over	562.8	588.2	594.7	11.1	11.3	10.9
Total	5 056.1	5 212.8	5 434.6	100.0	100.0	100.0
FEMALES						
Under 12 months	858.0	882.6	1 020.7	21.4	21.3	23.1
Under 3 months	276.2	265.8	295.5	6.9	6.4	6.7
3 and under 6 months	224.5	247.9	288.5	5.6	6.0	6.5
6 and under 12 months	357.3	369.0	436.7	8.9	8.9	9.9
1 and under 2 years	553.5	543.2	556.6	13.8	13.1	12.6
2 and under 3 years	474.0	467.0	476.2	11.8	11.3	10.8
3 and under 5 years	570.5	680.3	633.6	14.2	16.4	14.3
5 and under 10 years	708.6	730.0	781.2	17.7	17.6	17.7
10 and under 20 years	595.4	605.0	663.2	14.9	14.6	15.0
20 years and over	244.7	239.0	292.7	6.1	5.8	6.6
Total	4 004.6	4 147.2	4 424.2	100.0	100.0	100.0
PERSONS						
Under 12 months	1 799.5	1 877.5	2 110.4	19.9	20.1	21.4
Under 3 months	578.8	598.2	640.0	6.4	6.4	6.5
3 and under 6 months	487.1	528.5	597.2	5.4	5.6	6.1
6 and under 12 months	733.6	750.8	873.1	8.1	8.0	8.9
1 and under 2 years	1 120.8	1 134.3	1 172.5	12.4	12.1	11.9
2 and under 3 years	1 011.1	972.8	1 034.3	11.2	10.4	10.5
3 and under 5 years	1 288.9	1 462.2	1 372.4	14.2	15.6	13.9
5 and under 10 years	1 601.4	1 650.0	1 738.7	17.7	17.6	17.6
10 and under 20 years	1 431.7	1 436.1	1 543.1	15.8	15.3	15.7
20 years and over	807.4	827.2	887.4	8.9	8.8	9.0
Total	9 060.7	9 360.0	9 858.8	100.0	100.0	100.0

(a) See paragraph 17 of the Explanatory Notes for more information.

	Males	Females	Persons	Males	Females	Persons
	'000	'000	'000	%	%	%
Less than 12 months with employer/business at February 2006						
Changed employer/business in the last 12 months	634.6	517.3	1 151.8	58.2	50.6	54.5
Whether changed industry (last to current employer/business)(b)						
Same industry	294.6	225.8	520.4	27.0	22.1	24.6
Changed industry	340.0	291.4	631.4	31.2	28.5	29.9
Whether changed occupation (last to current employer/business)(c)						
Same occupation	361.8	286.7	648.5	33.2	28.1	30.7
Changed occupation	272.7	230.6	503.3	25.0	22.6	23.8
Whether changed usual hours worked (last to current employer/business)						
Same usual hours worked	175.7	110.2	285.9	16.1	10.8	13.5
Changed usual hours worked	458.9	407.0	865.9	42.1	39.9	41.0
Whether changed employment type (last to current employer/business)						
Same employment type	386.5	335.6	722.1	35.4	32.9	34.2
Changed employment type	248.1	181.6	429.7	22.7	17.8	20.3
Did not change employer/business in the last 12 months	456.6	504.1	960.7	41.8	49.4	45.5
Total	1 091.2	1 021.4	2 112.5	100.0	100.0	100.0
One year or more with employer/business at February 2006						
Employees(d)						
Whether changed occupation(e)(c)						
Same occupation	3 007.9	2 682.9	5 690.8	94.6	93.7	94.2
Changed occupation	170.2	181.1	351.3	5.4	6.3	5.8
Whether changed usual hours worked(e)						
Same usual hours worked	2 655.7	2 175.9	4 831.6	83.6	76.0	80.0
Changed usual hours worked	315.9	497.0	812.9	9.9	17.4	13.5
Varied/did not know	206.6	191.1	397.7	6.5	6.7	6.6
Whether promoted(e)						
Promoted	402.6	342.8	745.3	12.7	12.0	12.3
Not promoted	2 775.5	2 521.3	5 296.8	87.3	88.0	87.7
Whether transferred(e)						
Transferred	328.0	315.8	643.8	10.3	11.0	10.7
Not transferred	2 850.1	2 548.2	5 398.4	89.7	89.0	89.3
Whether promoted and/or transferred(e)						
Promoted and/or transferred	562.0	503.9	1 065.9	17.7	17.6	17.6
Not promoted or transferred	2 616.1	2 360.1	4 976.2	82.3	82.4	82.4
Total	3 178.1	2 864.0	6 042.1	100.0	100.0	100.0
Owner managers(e)(f)						
Whether changed usual hours worked						
Same usual hours worked	887.4	392.3	1 279.7	73.4	70.4	72.4
Changed usual hours worked	147.7	85.1	232.8	12.2	15.3	13.2
Varied/did not know	173.7	80.2	253.9	14.4	14.4	14.4
Total	1 208.8	557.6	1 766.5	100.0	100.0	100.0
Total	5 478.1	4 443.0	9 921.1

.. not applicable

(a) From February 2006, the scope of this survey changed to include all persons aged 15 years and over. See paragraph 17 of the Explanatory Notes for more information.

(b) A change in industry was defined as any change between industry Divisions (ANZSIC).

(c) A change in occupation was defined as any change between Major occupation groups (ASCO).

(d) Excludes owner managers of incorporated enterprises.

(e) In the last 12 months.

(f) Includes owner managers of incorporated and unincorporated enterprises and contributing family workers.

PERSONS WHO WERE WORKING AT FEBRUARY 2006(a), Duration with employer/business
at February 2006—By occupation at February 2006

Occupation at February 2006	UNDER 12 MONTHS										Total	
	Under 3 months	3 and under 6 months	6 and under 12 months	Total	1 and under 2 years	2 and under 3 years	3 and under 5 years	5 and under 10 years	10 and under 20 years	20 years and over		
MALES												
Managers and administrators	'000	14.9	17.7	27.2	59.8	36.9	50.9	69.3	122.8	143.6	146.2	629.5
Professionals	'000	47.6	31.8	66.2	145.7	92.0	91.8	135.9	194.3	163.2	117.2	940.0
Associate professionals	'000	30.0	32.6	51.0	113.6	70.3	58.7	97.4	137.5	108.1	78.2	663.8
Tradespersons and related workers	'000	78.5	56.9	79.7	215.1	141.9	121.3	159.7	194.8	194.4	125.2	1 152.3
Advanced clerical and service workers	'000	*2.3	*1.8	*4.0	8.1	6.1	8.1	7.4	10.9	9.6	8.0	58.1
Intermediate clerical, sales and service workers	'000	29.0	35.9	38.0	102.9	52.8	56.7	59.9	77.7	71.3	36.2	457.5
Intermediate production and transport workers	'000	48.3	53.2	67.9	169.5	85.4	79.4	88.0	123.2	112.8	59.9	718.1
Elementary clerical, sales and service workers	'000	24.3	35.7	38.7	98.6	56.9	36.8	47.4	33.3	26.4	14.7	314.1
Labourers and related workers	'000	70.2	43.3	64.4	177.9	74.2	56.1	75.7	67.1	60.4	33.2	544.6
Total	'000	345.1	308.9	437.2	1 091.2	616.4	559.7	740.7	961.6	889.7	618.9	5 478.1
Proportion	%	6.3	5.6	8.0	19.9	11.3	10.2	13.5	17.6	16.2	11.3	100.0
FEMALES												
Managers and administrators	'000	9.8	7.1	13.4	30.3	18.2	19.9	29.8	48.1	49.2	42.7	238.1
Professionals	'000	57.4	43.8	80.8	182.0	113.7	94.5	151.4	193.8	175.8	93.0	1 004.2
Associate professionals	'000	26.3	31.2	45.5	103.0	58.3	64.0	86.8	109.5	92.0	26.9	540.4
Tradespersons and related workers	'000	11.3	6.6	13.0	31.0	15.5	16.5	17.5	19.6	13.7	8.7	122.3
Advanced clerical and service workers	'000	13.9	15.7	29.2	58.8	35.4	30.7	46.9	68.8	69.8	39.0	349.4
Intermediate clerical, sales and service workers	'000	78.8	84.0	135.3	298.0	151.5	134.2	168.1	207.8	151.1	55.3	1 166.0
Intermediate production and transport workers	'000	6.5	9.6	9.2	25.3	14.1	9.1	9.8	15.5	17.2	*5.5	96.5
Elementary clerical, sales and service workers	'000	61.9	66.6	82.6	211.1	112.2	74.3	87.8	69.7	56.2	16.9	628.2
Labourers and related workers	'000	29.8	23.8	28.3	81.9	37.7	33.0	37.8	50.2	41.9	15.2	297.8
Total	'000	295.7	288.5	437.2	1 021.4	556.6	476.2	635.8	782.9	667.0	303.1	4 443.0
Proportion	%	6.7	6.5	9.8	23.0	12.5	10.7	14.3	17.6	15.0	6.8	100.0
PERSONS												
Managers and administrators	'000	24.7	24.8	40.5	90.1	55.1	70.8	99.1	170.9	192.8	188.9	867.6
Professionals	'000	105.0	75.6	147.0	327.6	205.6	186.3	287.3	388.1	339.1	210.2	1 944.2
Associate professionals	'000	56.3	63.8	96.5	216.6	128.6	122.6	184.2	247.0	200.1	105.1	1 204.2
Tradespersons and related workers	'000	89.8	63.5	92.8	246.1	157.4	137.7	177.2	214.3	208.1	133.8	1 274.7
Advanced clerical and service workers	'000	16.2	17.5	33.2	66.9	41.5	38.8	54.3	79.7	79.4	47.0	407.6
Intermediate clerical, sales and service workers	'000	107.7	119.8	173.3	400.9	204.3	190.8	228.0	285.5	222.5	91.5	1 623.5
Intermediate production and transport workers	'000	54.9	62.8	77.1	194.8	99.5	88.5	97.8	138.7	130.0	65.4	814.6
Elementary clerical, sales and service workers	'000	86.1	102.3	121.3	309.7	169.1	111.2	135.2	103.0	82.6	31.6	942.4
Labourers and related workers	'000	100.0	67.1	92.7	259.9	111.9	89.1	113.5	117.3	102.3	48.4	842.4
Total	'000	640.7	597.4	874.4	2 112.5	1 172.9	1 035.9	1 376.5	1 744.5	1 556.7	922.0	9 921.1
Proportion	%	6.5	6.0	8.8	21.3	11.8	10.4	13.9	17.6	15.7	9.3	100.0

* estimate has a relative standard error of 25% to 50% and should be used with caution

(a) From February 2006, the scope of this survey changed to include all persons aged 15 years and over. See paragraph 17 of the Explanatory Notes for more information.

PERSONS WHO WERE WORKING AT FEBRUARY 2006(a), Duration with employer/business
at February 2006—By industry at February 2006

UNDER 12 MONTHS

Industry at February 2006	UNDER 12 MONTHS		Total	1 and under 2 years	2 and under 3 years	3 and under 5 years	5 and under 10 years	10 years and over	Total
	Under 3 months	3 and under 12 months							
	'000	'000	'000	'000	'000	'000	'000	'000	'000

MALES

Agriculture, forestry and fishing	12.5	16.3	28.7	17.2	13.6	21.6	34.2	123.9	239.3
Mining	8.7	19.8	28.5	13.4	13.6	9.8	16.5	25.7	107.5
Manufacturing	46.4	100.9	147.3	82.1	82.0	104.1	144.3	234.9	794.7
Electricity, gas and water supply	*3.0	7.2	10.2	8.4	*3.5	6.0	9.9	33.5	71.4
Construction	62.2	90.7	152.9	90.2	76.6	104.7	138.9	218.5	781.9
Wholesale trade	11.7	43.8	55.5	32.7	28.5	44.7	56.8	70.9	289.1
Retail trade	49.8	129.7	179.6	111.3	84.6	102.0	102.2	115.8	695.4
Accommodation, cafes and restaurants	23.5	45.4	68.9	30.1	24.5	28.6	25.4	15.9	193.5
Transport and storage	16.3	40.8	57.0	35.0	32.5	46.8	67.6	104.0	343.0
Communication services	7.7	23.5	31.2	14.1	8.0	10.9	21.3	41.0	126.4
Finance and insurance	8.3	19.9	28.2	21.8	22.1	22.9	40.7	41.7	177.3
Property and business services	40.4	108.5	148.9	79.1	73.6	102.1	119.6	137.2	660.4
Government administration and defence	9.0	21.8	30.8	19.5	19.0	25.9	39.2	95.5	230.0
Education	15.2	13.2	28.4	15.4	21.8	26.6	39.4	85.0	216.7
Health and community services	12.3	24.4	36.7	20.1	27.2	30.8	43.2	64.1	222.2
Cultural and recreational services	8.2	18.7	26.9	10.7	11.3	20.0	20.3	36.7	126.0
Personal and other services	9.8	21.5	31.3	15.2	17.2	33.3	42.0	64.5	203.4
Total	345.1	746.1	1 091.2	616.4	559.7	740.7	961.6	1 508.6	5 478.1

FEMALES

Agriculture, forestry and fishing	6.1	8.0	14.1	9.9	8.2	9.6	14.6	55.1	111.4
Mining	*1.9	*4.5	6.4	*3.1	**1.1	*2.0	*3.4	*2.3	18.4
Manufacturing	13.5	46.6	60.1	29.0	28.3	41.0	53.7	74.7	286.7
Electricity, gas and water supply	*1.7	*1.3	*3.0	*2.7	*3.2	*2.5	*3.4	*4.6	19.5
Construction	*5.4	11.8	17.3	14.2	6.4	13.4	16.7	35.6	103.5
Wholesale trade	5.9	24.5	30.4	15.0	13.4	20.4	28.9	20.1	128.3
Retail trade	59.9	172.3	232.2	126.9	90.4	111.1	102.2	102.7	765.6
Accommodation, cafes and restaurants	36.1	69.1	105.2	43.5	31.0	33.0	30.4	21.2	264.2
Transport and storage	7.5	16.7	24.2	14.0	12.3	12.9	26.9	25.5	115.8
Communication services	*4.0	10.4	14.4	6.2	*5.5	*5.2	10.4	10.6	52.1
Finance and insurance	8.5	24.0	32.4	25.0	21.8	36.8	47.0	40.0	203.0
Property and business services	44.6	102.5	147.1	67.3	68.7	77.8	92.6	74.6	528.1
Government administration and defence	9.0	24.2	33.2	19.6	17.2	34.0	44.6	60.0	208.6
Education	29.3	34.8	64.1	38.8	38.1	64.2	94.1	181.4	480.7
Health and community services	35.1	120.0	155.2	95.7	84.5	132.8	164.1	195.3	827.7
Cultural and recreational services	13.6	22.9	36.5	22.2	15.5	13.8	19.3	28.8	136.0
Personal and other services	13.5	32.1	45.6	23.5	30.6	25.3	30.6	37.7	193.4
Total	295.7	725.7	1 021.4	556.6	476.2	635.8	782.9	970.1	4 443.0

* estimate has a relative standard error of 25% to 50% and should be used with caution

** estimate has a relative standard error greater than 50% and is considered too unreliable for general use

(a) From February 2006, the scope of this survey changed to include all persons aged 15 years and over. See paragraph 17 of the Explanatory Notes for more information.

PERSONS WHO WERE WORKING AT FEBRUARY 2006(a), Duration with employer/business
at February 2006—By industry at February 2006 *continued*

Industry at February 2006	UNDER 12 MONTHS								
	Under 3 months	3 and under 12 months	Total	1 and under 2 years	2 and under 3 years	3 and under 5 years	5 and under 10 years	10 years and over	Total
	'000	'000	'000	'000	'000	'000	'000	'000	'000
PERSONS									
Agriculture, forestry and fishing	18.5	24.3	42.8	27.1	21.8	31.2	48.8	179.0	350.7
Mining	10.6	24.3	34.9	16.6	14.7	11.8	19.9	28.0	125.9
Manufacturing	59.9	147.5	207.4	111.0	110.3	145.0	198.0	309.7	1 081.4
Electricity, gas and water supply	*4.7	8.5	13.2	11.1	6.7	8.5	13.3	38.1	91.0
Construction	67.6	102.6	170.2	104.4	83.0	118.0	155.6	254.1	885.4
Wholesale trade	17.7	68.3	85.9	47.7	42.0	65.1	85.7	90.9	417.4
Retail trade	109.7	302.1	411.8	238.2	175.0	213.1	204.4	218.5	1 461.0
Accommodation, cafes and restaurants	59.6	114.5	174.1	73.6	55.5	61.6	55.8	37.1	457.8
Transport and storage	23.8	57.5	81.3	48.9	44.9	59.8	94.4	129.5	458.8
Communication services	11.7	33.9	45.6	20.2	13.4	16.0	31.7	51.5	178.5
Finance and insurance	16.7	43.8	60.6	46.8	43.9	59.6	87.7	81.7	380.3
Property and business services	85.1	210.9	296.0	146.4	142.3	179.9	212.2	211.8	1 188.5
Government administration and defence	18.0	45.9	64.0	39.2	36.2	59.9	83.8	155.5	438.6
Education	44.4	48.0	92.5	54.3	59.8	90.8	133.5	266.4	697.4
Health and community services	47.5	144.4	191.9	115.9	111.7	163.7	207.3	259.3	1 049.8
Cultural and recreational services	21.9	41.6	63.4	32.8	26.8	33.8	39.6	65.4	261.9
Personal and other services	23.2	53.7	76.9	38.6	47.8	58.6	72.6	102.2	396.8
Total	640.7	1 471.8	2 112.5	1 172.9	1 035.9	1 376.5	1 744.5	2 478.8	9 921.1

* estimate has a relative standard error of 25% to 50% and should be used with caution

(a) From February 2006, the scope of this survey changed to include all persons aged 15 years and over. See paragraph 17 of the Explanatory Notes for more information.

PERSONS WHO WERE WORKING AT FEBRUARY 2006(a), Changes in employer/business or work(b)—By selected employment characteristics

	LESS THAN 12 MONTHS WITH EMPLOYER/BUSINESS AT FEBRUARY 2006				ONE YEAR OR MORE WITH EMPLOYER/BUSINESS AT FEBRUARY 2006				
	1 change in employer/ business	2 or more changes in employer/ business	Total with a change in employer/ business	Did not change employer/ business(c)	Employees with some change in work (b)(d)	Employees with no change in work(d)	Owner managers (e)	Total	Total
	'000	'000	'000	'000	'000	'000	'000	'000	'000
MALES									
Employment type at February 2006									
Employees(d)	436.3	133.7	570.0	391.6	767.3	2 410.8	..	3 178.1	4 139.8
With paid leave entitlements	300.3	76.0	376.2	182.0	668.5	2 058.8	..	2 727.3	3 285.5
Without paid leave entitlements	136.0	57.8	193.8	209.7	98.9	352.0	..	450.8	854.3
Owner managers of incorporated enterprises	13.4	*1.5	14.9	15.1	467.3	467.3	497.3
Owner managers of unincorporated enterprises(f)	40.1	9.6	49.7	49.9	741.5	741.5	841.1
Occupation at February 2006									
Managers and administrators	34.3	6.0	40.3	19.5	86.5	211.9	271.2	569.7	629.5
Professionals	73.8	16.1	89.9	55.8	171.3	410.3	212.8	794.4	940.0
Associate professionals	54.2	16.1	70.3	43.3	118.8	262.3	169.1	550.2	663.8
Tradespersons and related workers	102.5	30.2	132.7	82.4	116.7	496.4	324.1	937.2	1 152.3
Advanced clerical and service workers	*4.2	**0.7	*4.9	*3.2	9.3	29.7	11.1	50.1	58.1
Intermediate clerical, sales and service workers	43.2	17.6	60.9	42.0	84.4	234.8	35.4	354.6	457.5
Intermediate production and transport workers	79.6	24.9	104.5	65.0	88.4	365.1	95.1	548.6	718.1
Elementary clerical, sales and service workers	34.8	8.0	42.8	55.8	38.8	158.8	17.9	215.5	314.1
Labourers and related workers	63.1	25.1	88.2	89.7	53.1	241.5	72.0	366.7	544.6
Industry at February 2006									
Agriculture, forestry and fishing	10.9	6.7	17.6	11.1	10.2	55.2	145.1	210.5	239.3
Mining	15.8	*4.9	20.7	7.8	20.2	55.3	*3.5	79.0	107.5
Manufacturing	75.5	19.2	94.7	52.6	117.5	441.8	88.1	647.4	794.7
Electricity, gas and water supply	*4.0	**1.1	*5.1	*5.1	12.8	46.6	*1.8	61.2	71.4
Construction	68.0	20.6	88.6	64.3	61.8	254.5	312.8	629.0	781.9
Wholesale trade	26.3	8.0	34.3	21.2	44.7	139.0	50.0	233.6	289.1
Retail trade	70.7	15.1	85.9	93.7	98.3	295.2	122.3	515.8	695.4
Accommodation, cafes and restaurants	20.6	16.4	37.0	32.0	26.8	71.8	26.0	124.6	193.5
Transport and storage	26.7	9.3	36.0	21.0	47.1	173.2	65.6	285.9	343.0
Communication services	15.6	*2.5	18.1	13.1	17.2	58.3	19.7	95.2	126.4
Finance and insurance	15.0	*3.4	18.5	9.7	35.2	85.2	28.8	149.2	177.3
Property and business services	70.5	16.0	86.5	62.4	87.5	222.5	201.5	511.5	660.4
Government administration and defence	19.1	*3.8	22.9	7.9	56.8	138.7	*3.6	199.2	230.0
Education	11.9	*2.9	14.8	13.6	47.9	130.7	9.7	188.3	216.7
Health and community services	17.7	*4.3	22.0	14.7	33.8	107.1	44.6	185.4	222.2
Cultural and recreational services	8.8	*4.3	13.1	13.8	12.8	52.4	33.8	99.0	126.0
Personal and other services	12.6	6.3	18.8	12.5	36.8	83.3	52.0	172.1	203.4

* estimate has a relative standard error of 25% to 50% and should be used with caution

** estimate has a relative standard error greater than 50% and is considered too unreliable for general use

.. not applicable

(a) From February 2006, the scope of this survey changed to include all persons aged 15 years and over. See paragraph 17 of the Explanatory Notes for more information.

(b) Refer to the Glossary for the definition of 'Change of employer/business' and/or 'Change in work'.

(c) People who started with their current employer/business during the year ending February 2006 and had no previous employer/business within the 12 months to February 2006.

(d) Excludes owner managers of incorporated enterprises.

(e) Includes owner managers of incorporated and unincorporated enterprises and contributing family workers.

(f) Includes contributing family workers.

LESS THAN 12 MONTHS WITH EMPLOYER/BUSINESS AT FEBRUARY 2006					ONE YEAR OR MORE WITH EMPLOYER/BUSINESS AT FEBRUARY 2006				
1 change in employer/ business	2 or more changes in employer/ business	Total with a change in employer/ business	Did not change employer/ business(c)	Employees with some change in work (b)(d)	Employees with no change in work(d)	Owner managers (e)	Total	Total	
'000	'000	'000	'000	'000	'000	'000	'000	'000	

MALES *cont.*

Usual hours worked at February 2006

1-19	40.8	11.6	52.4	108.4	40.7	149.4	103.8	293.9	454.7
20-29	36.1	16.2	52.4	50.9	48.8	117.1	77.8	243.7	347.0
30-34	28.7	14.4	43.1	29.0	52.9	137.5	79.5	269.9	342.0
35-39	82.3	22.3	104.5	63.0	124.5	476.9	74.2	675.6	843.2
40	102.0	25.0	127.1	72.4	120.0	501.6	173.7	795.2	994.7
41-44	30.5	*5.2	35.6	20.4	60.2	141.6	29.5	231.3	287.4
45-48	58.3	19.1	77.4	34.8	84.9	286.3	121.1	492.3	604.5
49 or more	100.6	28.4	129.0	57.4	191.5	451.0	491.0	1 133.5	1 319.9
Less than 1 or no hours worked	10.4	*2.6	12.9	20.2	43.9	149.4	58.2	251.5	284.7
<i>Total</i>	489.7	144.8	634.6	456.6	767.3	2 410.8	1 208.8	4 387.0	5 478.1

* estimate has a relative standard error of 25% to 50% and should be used with caution

(a) From February 2006, the scope of this survey changed to include all persons aged 15 years and over. See paragraph 17 of the Explanatory Notes for more information.

(b) Refer to the Glossary for the definition of 'Change of employer/business' and/or 'Change in work'.

(c) People who started with their current employer/business during the year ending February 2006 and had no previous employer/business within the 12 months to February 2006.

(d) Excludes owner managers of incorporated enterprises.

(e) Includes owner managers of incorporated and unincorporated enterprises and contributing family workers.

	LESS THAN 12 MONTHS WITH EMPLOYER/BUSINESS AT FEBRUARY 2006				ONE YEAR OR MORE WITH EMPLOYER/BUSINESS AT FEBRUARY 2006				
	1 change in employer/ business	2 or more changes in employer/ business	Total with a change in employer/ business	Did not change employer/ business(c)	Employees with some change in work (b)(d)	Employees with no change in work(d)	Owner managers (e)	Total	Total
	'000	'000	'000	'000	'000	'000	'000	'000	'000
FEMALES									
Employment type at February 2006									
Employees(d)	360.3	131.6	491.8	457.9	850.3	2 013.7	..	2 864.0	3 813.7
With paid leave entitlements	238.4	69.3	307.7	180.7	680.0	1 544.3	..	2 224.3	2 712.8
Without paid leave entitlements	121.9	62.2	184.1	277.2	170.3	469.4	..	639.7	1 100.9
Owner managers of incorporated enterprises	6.1	**0.8	6.9	8.8	198.0	198.0	213.7
Owner managers of unincorporated enterprises(f)	14.4	*4.1	18.5	37.5	359.7	359.7	415.6
Occupation at February 2006									
Managers and administrators	17.3	*4.8	22.1	8.3	48.1	80.7	79.0	207.8	238.1
Professionals	84.1	26.1	110.2	71.7	234.8	493.2	94.2	822.2	1 004.2
Associate professionals	44.4	15.1	59.5	43.5	107.5	222.9	107.0	437.4	540.4
Tradespersons and related workers	7.8	*4.5	12.3	18.7	16.0	44.1	31.2	91.4	122.3
Advanced clerical and service workers	27.8	9.8	37.6	21.2	47.0	125.3	118.4	290.6	349.4
Intermediate clerical, sales and service workers	113.1	42.9	155.9	142.1	229.4	565.3	73.2	868.0	1 166.0
Intermediate production and transport workers	7.6	*1.8	9.3	15.9	12.9	48.8	9.5	71.2	96.5
Elementary clerical, sales and service workers	59.9	21.2	81.1	130.0	115.0	287.8	14.4	417.1	628.2
Labourers and related workers	18.7	10.5	29.2	52.7	39.6	145.6	30.7	215.9	297.8
Industry at February 2006									
Agriculture, forestry and fishing	*2.8	*2.5	*5.3	8.8	*4.5	18.2	74.7	97.3	111.4
Mining	*3.9	**1.0	*5.0	*1.4	*4.6	7.1	**0.2	12.0	18.4
Manufacturing	24.7	7.0	31.6	28.4	46.6	137.4	42.6	226.6	286.7
Electricity, gas and water supply	*1.5	**0.3	*1.8	**1.2	*4.6	11.0	**0.9	16.5	19.5
Construction	6.3	*2.0	8.4	8.9	*5.5	26.8	53.9	86.2	103.5
Wholesale trade	10.6	*4.3	14.8	15.6	18.2	61.3	18.3	97.9	128.3
Retail trade	70.6	24.0	94.6	137.6	144.5	315.2	73.8	533.4	765.6
Accommodation, cafes and restaurants	34.4	15.7	50.0	55.2	39.4	95.4	24.3	159.0	264.2
Transport and storage	8.6	*3.5	12.1	12.1	24.4	48.7	18.5	91.6	115.8
Communication services	*5.2	*1.7	6.9	7.5	8.0	24.5	*5.3	37.8	52.1
Finance and insurance	16.4	*5.1	21.6	10.8	56.9	104.0	9.6	170.5	203.0
Property and business services	64.7	22.1	86.8	60.3	85.9	196.2	98.9	381.0	528.1
Government administration and defence	17.8	5.6	23.4	9.8	65.6	107.2	*2.6	175.4	208.6
Education	23.2	6.8	30.0	34.0	111.6	287.1	17.9	416.6	480.7
Health and community services	60.3	23.9	84.1	71.0	174.5	450.6	47.4	672.5	827.7
Cultural and recreational services	12.7	6.9	19.6	16.9	22.2	51.4	25.8	99.5	136.0
Personal and other services	17.1	*4.1	21.2	24.4	33.2	71.6	43.0	147.7	193.4

* estimate has a relative standard error of 25% to 50% and should be used with caution

** estimate has a relative standard error greater than 50% and is considered too unreliable for general use

.. not applicable

(a) From February 2006, the scope of this survey changed to include all persons aged 15 years and over. See paragraph 17 of the Explanatory Notes for more information.

(b) Refer to the Glossary for the definition of 'Change of employer/business' and/or 'Change in work'.

(c) People who started with their current employer/business during the year ending February 2006 and had no previous employer/business within the 12 months to February 2006.

(d) Excludes owner managers of incorporated enterprises.

(e) Includes owner managers of incorporated and unincorporated enterprises and contributing family workers.

(f) Includes contributing family workers.

LESS THAN 12 MONTHS WITH EMPLOYER/BUSINESS AT FEBRUARY 2006					ONE YEAR OR MORE WITH EMPLOYER/BUSINESS AT FEBRUARY 2006				
1 change in employer/ business	2 or more changes in employer/ business	Total with a change in employer/ business	Did not change employer/ business(c)	Employees with some change in work (b)(d)	Employees with no change in work(d)	Owner managers (e)	Total	Total	
'000	'000	'000	'000	'000	'000	'000	'000	'000	

FEMALES *cont.*

Usual hours worked at February 2006

1-19	70.6	28.9	99.4	201.1	156.0	374.3	197.3	727.6	1 028.1
20-29	53.1	25.4	78.5	89.9	126.0	314.9	86.8	527.6	696.1
30-34	30.1	10.8	41.0	36.0	97.0	211.4	45.5	353.9	430.8
35-39	87.4	28.4	115.8	66.3	148.0	390.1	30.7	568.8	750.9
40	53.0	19.0	72.0	43.4	99.5	277.5	38.5	415.5	530.9
41-44	22.5	6.8	29.3	12.1	39.5	80.9	8.6	129.0	170.4
45-48	24.7	*4.8	29.5	13.8	58.5	97.9	22.4	178.8	222.2
49 or more	30.3	8.5	38.8	20.3	68.7	129.3	84.1	282.1	341.2
Less than 1 or no hours worked	9.0	*3.9	13.0	21.2	57.2	137.4	43.7	238.3	272.4
<i>Total</i>	380.8	136.5	517.3	504.1	850.3	2 013.7	557.6	3 421.6	4 443.0

* estimate has a relative standard error of 25% to 50% and should be used with caution

(a) From February 2006, the scope of this survey changed to include all persons aged 15 years and over. See paragraph 17 of the Explanatory Notes for more information.

(b) Refer to the Glossary for the definition of 'Change of employer/business' and/or 'Change in work'.

(c) People who started with their current employer/business during the year ending February 2006 and had no previous employer/business within the 12 months to February 2006.

(d) Excludes owner managers of incorporated enterprises.

(e) Includes owner managers of incorporated and unincorporated enterprises and contributing family workers.

PERSONS WHO WERE WORKING AT FEBRUARY 2006(a), Changes in employer/business or work(b)—By selected employment characteristics *continued*

	LESS THAN 12 MONTHS WITH EMPLOYER/BUSINESS AT FEBRUARY 2006				ONE YEAR OR MORE WITH EMPLOYER/BUSINESS AT FEBRUARY 2006				Total '000	Total '000
	1 change in employer/ business	2 or more changes in employer/ business	Total with a change in employer/ business	Did not change employer/ business(c)	Employees with some change in work (b)(d)	Employees with no change in work(d)	Owner managers (e)	Total		
	'000	'000	'000	'000	'000	'000	'000	'000		
PERSONS										
Employment type at February 2006										
Employees(d)	796.6	265.3	1 061.8	849.5	1 617.7	4 424.5	..	6 042.1	7 953.5	
With paid leave entitlements	538.7	145.3	683.9	362.7	1 348.5	3 603.1	..	4 951.6	5 998.2	
Without paid leave entitlements	257.9	120.0	377.9	486.8	269.2	821.3	..	1 090.5	1 955.2	
Owner managers of incorporated enterprises	19.5	*2.4	21.9	23.9	665.2	665.2	711.0	
Owner managers of unincorporated enterprises(f)	54.5	13.7	68.1	87.4	1 101.2	1 101.2	1 256.7	
Occupation at February 2006										
Managers and administrators	51.6	10.8	62.3	27.8	134.6	292.6	350.3	777.5	867.6	
Professionals	157.9	42.2	200.1	127.5	406.0	903.5	307.0	1 616.6	1 944.2	
Associate professionals	98.6	31.2	129.8	86.8	226.3	485.1	276.2	987.6	1 204.2	
Tradespersons and related workers	110.3	34.7	145.0	101.1	132.7	540.5	355.3	1 028.6	1 274.7	
Advanced clerical and service workers	32.1	10.5	42.5	24.4	56.3	155.0	129.5	340.7	407.6	
Intermediate clerical, sales and service workers	156.3	60.5	216.8	184.1	313.9	800.1	108.6	1 222.6	1 623.5	
Intermediate production and transport workers	87.2	26.7	113.9	80.9	101.3	414.0	104.6	619.8	814.6	
Elementary clerical, sales and service workers	94.7	29.2	123.9	185.8	153.8	446.6	32.3	632.6	942.4	
Labourers and related workers	81.8	35.6	117.4	142.4	92.7	387.1	102.7	582.5	842.4	
Industry at February 2006										
Agriculture, forestry and fishing	13.7	9.2	22.9	20.0	14.8	73.3	219.8	307.9	350.7	
Mining	19.8	5.9	25.7	9.2	24.8	62.4	*3.7	90.9	125.9	
Manufacturing	100.2	26.2	126.3	81.1	164.0	579.2	130.8	874.0	1 081.4	
Electricity, gas and water supply	*5.4	*1.4	6.9	6.4	17.5	57.5	*2.7	77.7	91.0	
Construction	74.3	22.6	96.9	73.3	67.2	281.3	366.7	715.2	885.4	
Wholesale trade	36.9	12.3	49.1	36.8	62.8	200.3	68.3	331.5	417.4	
Retail trade	141.3	39.1	180.5	231.3	242.8	610.4	196.1	1 049.2	1 461.0	
Accommodation, cafes and restaurants	54.9	32.0	87.0	87.2	66.2	167.3	50.2	283.7	457.8	
Transport and storage	35.3	12.9	48.2	33.1	71.5	221.9	84.1	377.5	458.8	
Communication services	20.8	*4.2	25.0	20.6	25.2	82.8	24.9	132.9	178.5	
Finance and insurance	31.4	8.6	40.0	20.5	92.2	189.2	38.3	319.7	380.3	
Property and business services	135.2	38.2	173.4	122.6	173.4	418.7	300.4	892.5	1 188.5	
Government administration and defence	36.9	9.4	46.3	17.7	122.4	246.0	6.2	374.6	438.6	
Education	35.1	9.7	44.8	47.7	159.5	417.8	27.6	604.9	697.4	
Health and community services	78.0	28.2	106.1	85.8	208.2	557.7	92.0	857.9	1 049.8	
Cultural and recreational services	21.5	11.2	32.7	30.8	35.0	103.9	59.6	198.5	261.9	
Personal and other services	29.7	10.4	40.1	36.9	70.0	154.9	95.0	319.9	396.8	

* estimate has a relative standard error of 25% to 50% and should be used with caution

.. not applicable

(a) From February 2006, the scope of this survey changed to include all persons aged 15 years and over. See paragraph 17 of the Explanatory Notes for more information.

(b) Refer to the Glossary for the definition of 'Change of employer/business' and/or 'Change in work'.

(c) People who started with their current employer/business during the year ending February 2006 and had no previous employer/business within the 12 months to February 2006.

(d) Excludes owner managers of incorporated enterprises.

(e) Includes owner managers of incorporated and unincorporated enterprises and contributing family workers.

(f) Includes contributing family workers.

PERSONS WHO WERE WORKING AT FEBRUARY 2006(a), Changes in employer/business or work(b)—By selected employment characteristics *continued*

	LESS THAN 12 MONTHS WITH EMPLOYER/BUSINESS AT FEBRUARY 2006				ONE YEAR OR MORE WITH EMPLOYER/BUSINESS AT FEBRUARY 2006				
	1 change in employer/ business	2 or more changes in employer/ business	Total with a change in employer/ business	Did not change employer/ business(c)	Employees with some change in work (b)(d)	Employees with no change in work(d)	Owner managers (e)	Total	Total
	'000	'000	'000	'000	'000	'000	'000	'000	'000
PERSONS <i>cont.</i>									
Usual hours worked at February 2006									
1–19	111.4	40.5	151.9	309.5	196.7	523.7	301.1	1 021.5	1 482.8
20–29	89.2	41.7	130.9	140.9	174.8	432.0	164.5	771.3	1 043.1
30–34	58.9	25.2	84.1	65.0	149.9	348.9	125.0	623.8	772.8
35–39	169.7	50.7	220.3	129.4	272.5	867.0	104.9	1 244.4	1 594.1
40	155.1	44.0	199.1	115.8	219.4	779.1	212.2	1 210.7	1 525.5
41–44	52.9	12.0	64.9	32.6	99.7	222.6	38.1	360.4	457.9
45–48	83.0	24.0	106.9	48.6	143.4	384.2	143.6	671.2	826.7
49 or more	130.9	36.9	167.8	77.6	260.1	580.3	575.2	1 415.6	1 661.1
Less than 1 or no hours worked	19.4	6.5	25.9	41.4	101.1	286.7	102.0	489.8	557.1
Total	870.5	281.3	1 151.8	960.7	1 617.7	4 424.5	1 766.5	7 808.6	9 921.1

- (a) From February 2006, the scope of this survey changed to include all persons aged 15 years and over. See paragraph 17 of the Explanatory Notes for more information.
- (b) Refer to the Glossary for the definition of 'Change of employer/business' and/or 'Change in work'.

- (c) People who started with their current employer/business during the year ending February 2006 and had no previous employer/business within the 12 months to February 2006.
- (d) Excludes owner managers of incorporated enterprises.
- (e) Includes owner managers of incorporated and unincorporated enterprises and contributing family workers.

PERSONS WHO WORKED AT SOME TIME DURING THE YEAR ENDING FEBRUARY 2006(a),
Changes in employer/business or work(b)—By selected demographic characteristics

	LESS THAN 12 MONTHS WITH EMPLOYER/BUSINESS AT FEBRUARY 2006				ONE YEAR OR MORE WITH EMPLOYER/BUSINESS AT FEBRUARY 2006				Total	Total(c)
	1 change in employer/ business	2 or more changes in employer/ business	Total with a change in employer/ business	Did not change employer/ business(d)	Employees with some change in work (b)(e)	Employees with no change in work(e)	Owner managers (f)			
	'000	'000	'000	'000	'000	'000	'000	'000	'000	
MALES										
Age group (years)										
15–19	41.9	15.5	57.4	122.8	39.4	128.8	6.0	174.1	411.3	
20–24	94.1	31.8	125.9	74.0	107.7	237.2	24.2	369.0	632.8	
25–34	138.0	51.6	189.6	95.4	229.5	524.2	177.4	931.1	1 285.1	
35–44	110.6	26.7	137.3	73.4	185.1	571.4	324.6	1 081.1	1 346.2	
45–54	70.4	14.6	85.0	54.1	136.0	570.5	340.5	1 047.1	1 225.6	
55–59	23.3	*3.1	26.4	20.2	43.6	217.0	150.5	411.2	485.9	
60 and over	11.4	*1.5	12.9	16.8	25.9	161.7	185.7	373.3	452.2	
Marital status										
Married	280.1	71.2	351.2	184.2	498.0	1 589.2	986.0	3 073.2	3 763.5	
Not married	209.7	73.7	283.3	272.4	269.4	821.5	222.8	1 313.7	2 075.7	
Relationship in household										
Family member	392.3	102.8	495.1	372.1	626.4	2 028.4	1 050.8	3 705.7	4 850.3	
Husband, wife or partner	273.2	69.7	342.9	180.4	489.5	1 562.3	964.2	3 015.9	3 689.5	
With dependants	144.6	36.2	180.8	87.6	264.0	881.0	518.1	1 663.1	1 995.5	
Without dependants	128.6	33.5	162.1	92.8	225.5	681.3	446.1	1 352.9	1 694.0	
Lone parent	7.3	**0.9	8.2	6.9	13.1	43.7	26.5	83.3	108.2	
With dependants	*5.0	**0.9	5.9	*5.2	10.2	27.0	18.1	55.3	74.9	
Without dependants	*2.3	—	*2.3	*1.8	*2.9	16.6	8.4	27.9	33.4	
Dependent student	17.2	*3.8	21.0	78.1	20.4	72.1	*4.5	97.0	244.8	
Non-dependent child	79.6	23.8	103.3	88.7	91.6	310.4	46.0	448.0	697.6	
Other family person	15.0	*4.7	19.7	18.0	11.9	40.0	9.7	61.5	110.2	
Non-family member or person living alone	78.6	33.8	112.4	67.3	124.0	330.7	129.5	584.2	832.0	
Lone person	44.2	13.3	57.5	31.0	75.3	207.4	102.4	385.1	510.5	
Not living alone	34.5	20.5	54.9	36.4	48.7	123.3	27.0	199.1	321.5	
Relationship not determined	18.8	8.2	27.0	17.1	16.9	51.7	28.6	97.1	156.9	
Country of birth										
Born in Australia	364.9	117.2	482.1	318.2	594.9	1 795.0	864.9	3 254.8	4 319.6	
Born overseas	124.9	27.6	152.5	138.5	172.4	615.8	344.0	1 132.2	1 519.5	
Level of highest non-school qualification										
With a non-school qualification	285.1	84.0	369.1	196.5	493.3	1 391.2	773.3	2 657.9	3 388.1	
Postgraduate Degree	19.5	*1.5	20.9	10.6	40.6	95.3	45.9	181.8	224.7	
Graduate Diploma/Graduate Certificate	6.8	*4.0	10.8	*4.2	24.9	42.2	20.4	87.4	107.9	
Bachelor Degree	80.0	16.3	96.3	61.4	156.6	371.4	178.8	706.8	906.4	
Advanced Diploma/Diploma	33.3	7.8	41.1	24.5	61.1	177.7	75.8	314.5	400.1	
Certificate III/IV	110.2	37.8	148.0	64.3	154.4	544.6	363.9	1 062.9	1 332.4	
Certificate I/II	18.2	9.8	28.0	19.7	29.0	96.7	56.7	182.4	247.9	
Certificate not further defined	9.2	*4.4	13.6	*5.4	15.7	36.2	14.9	66.8	91.9	
Level not determined	8.0	*2.4	10.4	6.4	11.2	27.1	17.0	55.3	76.8	
Without a non-school qualification	204.6	60.8	265.5	260.1	274.0	1 019.6	435.5	1 729.1	2 451.1	
Total	489.7	144.8	634.6	456.6	767.3	2 410.8	1 208.8	4 387.0	5 839.1	

* estimate has a relative standard error of 25% to 50% and should be used with caution

** estimate has a relative standard error greater than 50% and is considered too unreliable for general use

— nil or rounded to zero (including null cells)

(a) From February 2006, the scope of this survey changed to include all persons aged 15 years and over. See paragraph 17 of the Explanatory Notes for more information.

(b) Refer to the Glossary for the definition of 'Change of employer/business' and/or 'Change in work'.

(c) Includes persons who were not employed at February 2006.

(d) People who started with their current employer/business during the year ending February 2006 and had no previous employer/business within the 12 months to February 2006.

(e) Excludes owner managers of incorporated enterprises.

(f) Includes owner managers of incorporated and unincorporated enterprises and contributing family workers.

PERSONS WHO WORKED AT SOME TIME DURING THE YEAR ENDING FEBRUARY 2006(a),
Changes in employer/business or work(b)—By selected demographic characteristics

continued

	LESS THAN 12 MONTHS WITH EMPLOYER/BUSINESS AT FEBRUARY 2006				ONE YEAR OR MORE WITH EMPLOYER/BUSINESS AT FEBRUARY 2006				Total	Total(c)
	1 change in employer/ business	2 or more changes in employer/ business	Total with a change in employer/ business	Did not change employer/ business(d)	Employees with some change in work (b)(e)	Employees with no change in work(e)	Owner managers (f)			
	'000	'000	'000	'000	'000	'000	'000	'000	'000	
FEMALES										
Age group (years)										
15–19	39.2	20.6	59.8	120.5	53.3	113.4	*4.7	171.4	415.8	
20–24	77.6	34.2	111.8	77.8	106.8	205.6	7.2	319.6	577.0	
25–34	114.3	38.7	153.0	109.5	236.1	379.0	76.2	691.4	1 069.2	
35–44	82.2	22.3	104.5	107.0	212.4	456.7	166.3	835.5	1 142.6	
45–54	52.8	16.7	69.5	60.1	170.5	554.4	169.3	894.1	1 090.2	
55–59	10.6	*2.7	13.3	17.2	49.1	198.0	68.6	315.8	378.0	
60 and over	*4.1	*1.3	*5.4	12.1	22.1	106.5	65.2	193.8	250.6	
Marital status										
Married	198.0	53.1	251.1	217.7	501.9	1 269.0	484.2	2 255.1	3 004.0	
Not married	182.7	83.4	266.1	286.4	348.4	744.7	73.4	1 166.5	1 919.3	
Relationship in household										
Family member	304.5	106.2	410.7	428.3	688.4	1 691.2	509.4	2 889.0	4 139.9	
Husband, wife or partner	193.8	51.5	245.4	210.0	490.5	1 235.1	469.7	2 195.3	2 922.6	
With dependants	83.8	17.1	100.9	124.6	261.0	565.3	250.8	1 077.2	1 458.7	
Without dependants	110.0	34.4	144.5	85.4	229.5	669.7	218.9	1 118.1	1 464.0	
Lone parent	26.8	11.6	38.4	48.5	72.6	156.6	23.9	253.1	389.2	
With dependants	22.7	9.0	31.7	44.3	60.7	110.8	17.7	189.1	306.6	
Without dependants	*4.1	*2.7	6.7	*4.2	11.9	45.8	6.2	63.9	82.7	
Dependent student	19.7	12.3	32.0	89.6	33.6	97.8	*3.7	135.1	307.0	
Non-dependent child	55.5	24.1	79.6	67.7	76.3	168.7	7.7	252.7	431.0	
Other family person	8.7	6.6	15.3	12.6	15.4	33.1	*4.4	52.9	90.1	
Non-family member or person living alone	67.0	25.1	92.1	58.5	137.6	264.0	32.1	433.6	636.7	
Lone person	33.9	12.1	46.0	29.4	89.9	198.7	26.2	314.8	420.4	
Not living alone	33.1	12.9	46.0	29.1	47.6	65.3	5.9	118.8	216.3	
Relationship not determined	9.2	*5.3	14.5	17.2	24.4	58.5	16.1	99.0	146.7	
Country of birth										
Born in Australia	297.5	109.8	407.3	372.5	676.2	1 519.4	418.4	2 614.0	3 760.2	
Born overseas	83.3	26.7	110.0	131.6	174.1	494.3	139.2	807.6	1 163.1	
Level of highest non-school qualification										
With a non-school qualification	229.1	83.5	312.6	232.6	535.2	1 126.9	315.3	1 977.4	2 766.1	
Postgraduate Degree	13.4	*3.9	17.4	9.8	34.7	67.4	18.4	120.6	160.4	
Graduate Diploma/Graduate Certificate	12.2	*3.2	15.4	7.6	41.7	72.8	14.4	128.9	166.7	
Bachelor Degree	83.5	26.3	109.8	80.2	193.9	403.3	77.2	674.3	943.2	
Advanced Diploma/Diploma	32.3	14.0	46.3	38.7	97.2	197.7	77.8	372.8	502.0	
Certificate III/IV	47.9	17.4	65.3	45.5	86.8	176.6	54.9	318.2	474.3	
Certificate I/II	25.0	10.4	35.4	33.3	53.8	149.4	57.5	260.7	362.9	
Certificate not further defined	11.6	6.7	18.2	11.8	19.6	40.1	9.9	69.6	110.2	
Level not determined	*3.3	*1.6	*4.8	5.7	7.6	19.6	*5.2	32.4	46.3	
Without a non-school qualification	151.7	53.0	204.7	271.5	315.2	886.8	242.3	1 444.3	2 157.2	
Total	380.8	136.5	517.3	504.1	850.3	2 013.7	557.6	3 421.6	4 923.3	

* estimate has a relative standard error of 25% to 50% and should be used with caution

(a) From February 2006, the scope of this survey changed to include all persons aged 15 years and over. See paragraph 17 of the Explanatory Notes for more information.

(b) Refer to the Glossary for the definition of 'Change of employer/business' and/or 'Change in work'.

(c) Includes persons who were not employed at February 2006.

(d) People who started with their current employer/business during the year ending February 2006 and had no previous employer/business within the 12 months to February 2006.

(e) Excludes owner managers of incorporated enterprises.

(f) Includes owner managers of incorporated and unincorporated enterprises and contributing family workers.

PERSONS WHO WORKED AT SOME TIME DURING THE YEAR ENDING FEBRUARY 2006(a),
Changes in employer/business or work(b)—By selected demographic characteristics

continued

	LESS THAN 12 MONTHS WITH EMPLOYER/BUSINESS AT FEBRUARY 2006				ONE YEAR OR MORE WITH EMPLOYER/BUSINESS AT FEBRUARY 2006				
	1 change in employer/ business	2 or more changes in employer/ business	Total with a change in employer/ business	Did not change employer/ business(d)	Employees with some change in work (b)(e)	Employees with no change in work(e)	Owner managers (f)	Total	Total(c)
	'000	'000	'000	'000	'000	'000	'000	'000	'000
PERSONS									
Age group (years)									
15–19	81.1	36.1	117.2	243.3	92.7	242.2	10.6	345.5	827.1
20–24	171.8	66.0	237.7	151.8	214.5	442.8	31.4	688.6	1 209.9
25–34	252.3	90.3	342.6	204.8	465.7	903.2	253.6	1 622.5	2 354.2
35–44	192.7	49.0	241.7	180.4	397.6	1 028.2	490.9	1 916.6	2 488.8
45–54	123.2	31.3	154.5	114.2	306.5	1 124.9	509.7	1 941.2	2 315.8
55–59	33.9	5.9	39.8	37.4	92.7	415.0	219.2	727.0	863.9
60 and over	15.5	*2.8	18.3	28.9	48.0	268.2	250.9	567.1	702.8
Marital status									
Married	478.1	124.3	602.3	401.9	999.9	2 858.2	1 470.2	5 328.3	6 767.5
Not married	392.4	157.1	549.5	558.8	617.8	1 566.2	296.2	2 480.3	3 995.0
Relationship in household									
Family member	696.8	209.0	905.8	800.5	1 314.8	3 719.6	1 560.2	6 594.7	8 990.2
Husband, wife or partner	467.0	121.2	588.2	390.4	980.0	2 797.4	1 433.8	5 211.2	6 612.1
With dependants	228.4	53.3	281.7	212.2	525.0	1 446.4	768.9	2 740.2	3 454.2
Without dependants	238.6	67.9	306.6	178.2	455.0	1 351.0	664.9	2 470.9	3 157.9
Lone parent	34.1	12.5	46.6	55.4	85.7	200.3	50.4	336.3	497.4
With dependants	27.7	9.9	37.6	49.5	70.9	137.8	35.7	244.5	381.4
Without dependants	6.4	*2.7	9.1	5.9	14.8	62.4	14.6	91.8	116.0
Dependent student	36.9	16.1	53.0	167.7	54.0	169.8	8.2	232.0	551.8
Non-dependent child	135.1	47.8	182.9	156.4	167.9	479.0	53.7	700.6	1 128.6
Other family person	23.7	11.3	35.0	30.6	27.3	73.1	14.1	114.5	200.2
Non-family member or person living alone	145.6	58.8	204.5	125.9	261.6	594.7	161.6	1 017.8	1 468.7
Lone person	78.1	25.4	103.5	60.4	165.3	406.1	128.6	699.9	930.9
Not living alone	67.5	33.4	101.0	65.5	96.3	188.6	33.0	317.9	537.8
Relationship not determined	28.0	13.5	41.5	34.4	41.2	110.2	44.7	196.1	303.5
Country of birth									
Born in Australia	662.4	227.0	889.4	690.6	1 271.1	3 314.4	1 283.3	5 868.8	8 079.8
Born overseas	208.1	54.3	262.4	270.1	346.6	1 110.1	483.2	1 939.8	2 682.6
Level of highest non-school qualification									
With a non-school qualification	514.2	167.5	681.6	429.1	1 028.5	2 518.1	1 088.6	4 635.2	6 154.1
Postgraduate Degree	32.9	*5.4	38.3	20.4	75.3	162.7	64.4	302.4	385.1
Graduate Diploma/Graduate Certificate	19.0	7.3	26.2	11.8	66.5	115.0	34.8	216.3	274.6
Bachelor Degree	163.5	42.5	206.0	141.6	350.5	774.7	255.9	1 381.1	1 849.6
Advanced Diploma/Diploma	65.5	21.9	87.4	63.2	158.3	375.4	153.6	687.3	902.1
Certificate III/IV	158.2	55.2	213.3	109.8	241.1	721.2	418.7	1 381.1	1 806.7
Certificate I/II	43.2	20.2	63.4	53.0	82.8	246.1	114.2	443.1	610.8
Certificate not further defined	20.8	11.0	31.8	17.2	35.2	76.3	24.8	136.3	202.0
Level not determined	11.2	*4.0	15.2	12.1	18.8	46.7	22.2	87.7	123.1
Without a non-school qualification	356.3	113.9	470.2	531.7	589.2	1 906.4	677.8	3 173.4	4 608.3
Total	870.5	281.3	1 151.8	960.7	1 617.7	4 424.5	1 766.5	7 808.6	10 762.4

* estimate has a relative standard error of 25% to 50% and should be used with caution

(a) From February 2006, the scope of this survey changed to include all persons aged 15 years and over. See paragraph 17 of the Explanatory Notes for more information.

(b) Refer to the Glossary for the definition of 'Change of employer/business' and/or 'Change in work'.

(c) Includes persons who were not employed at February 2006.

(d) People who started with their current employer/business during the year ending February 2006 and had no previous employer/business within the 12 months to February 2006.

(e) Excludes owner managers of incorporated enterprises.

(f) Includes owner managers of incorporated and unincorporated enterprises and contributing family workers.

OCCUPATION AT FEBRUARY 2005

	<i>Managers and administrators</i>	<i>Professionals</i>	<i>Associate professionals</i>	<i>Tradespersons and related workers</i>	<i>Advanced clerical and service workers</i>	<i>Intermediate clerical, sales and service workers</i>
	'000	'000	'000	'000	'000	'000
Working at February 2006	825.7	1 796.4	1 097.8	1 173.6	380.7	1 432.2
Managers and administrators	781.8	20.7	15.1	*3.4	**1.1	7.3
Professionals	13.2	1 732.3	20.8	*4.6	7.8	24.7
Associate professionals	15.3	15.8	1 006.9	7.9	6.3	36.4
Tradespersons and related workers	*2.7	*2.2	*4.9	1 115.4	**0.2	7.9
Advanced clerical and service workers	*1.3	*3.8	*4.6	**0.6	352.4	13.2
Intermediate clerical, sales and service workers	7.0	11.4	26.5	*5.4	9.3	1 304.4
Intermediate production and transport workers	*1.9	*2.8	6.5	13.2	—	6.4
Elementary clerical, sales and service workers	**1.0	*5.5	8.1	6.4	*3.5	21.3
Labourers and related workers	*1.5	*1.9	*4.4	16.7	**0.2	10.7
Not working at February 2006	24.4	113.4	62.3	53.9	21.7	110.7
Unemployed at February 2006	*4.2	29.6	18.9	20.3	*3.9	37.0
Not in the Labour Force at February 2006	20.2	83.8	43.4	33.5	17.8	73.7
Total	850.1	1 909.8	1 160.0	1 227.5	402.5	1 543.0

* estimate has a relative standard error of 25% to 50% and should be used with caution

** estimate has a relative standard error greater than 50% and is considered too unreliable for general use

— nil or rounded to zero (including null cells)

(a) From February 2006, the scope of this survey changed to include all persons aged 15 years and over. See paragraph 17 of the Explanatory Notes for more information.

OCCUPATION AT FEBRUARY 2005 *continued*

	<i>Intermediate production and transport workers</i>	<i>Elementary clerical, sales and service workers</i>	<i>Labourers and related workers</i>	<i>Total</i>	<i>Not working at February 2005</i>	<i>Total</i>
	'000	'000	'000	'000	'000	'000
Working at February 2006	730.1	809.5	713.1	8 959.2	962.0	9 921.1
Managers and administrators	*4.6	*4.9	*3.5	842.4	25.2	867.6
Professionals	*4.6	16.5	5.9	1 830.3	113.9	1 944.2
Associate professionals	6.3	18.4	7.8	1 121.1	83.2	1 204.2
Tradespersons and related workers	12.1	10.6	16.6	1 172.6	102.1	1 274.7
Advanced clerical and service workers	*1.6	*4.6	**0.2	382.3	25.3	407.6
Intermediate clerical, sales and service workers	12.6	47.4	15.4	1 439.4	184.0	1 623.5
Intermediate production and transport workers	671.2	6.1	22.8	730.9	83.7	814.6
Elementary clerical, sales and service workers	*5.4	688.8	8.8	748.8	193.6	942.4
Labourers and related workers	11.6	12.2	632.1	691.3	151.1	842.4
Not working at February 2006	44.6	102.2	79.4	612.7	228.6	841.3
Unemployed at February 2006	18.2	40.3	39.0	211.5	82.9	294.4
Not in the Labour Force at February 2006	26.4	61.9	40.4	401.2	145.7	546.9
Total	774.7	911.7	792.6	9 571.8	1 190.6	10 762.4

* estimate has a relative standard error of 25% to 50% and should be used with caution

** estimate has a relative standard error greater than 50% and is considered too unreliable for general use

(a) From February 2006, the scope of this survey changed to include all persons aged 15 years and over. See paragraph 17 of the Explanatory Notes for more information.

PERSONS WHO WORKED AT SOME TIME DURING THE YEAR ENDING FEBRUARY 2006(a),
Occupation at February 2005—By changes in employer/business or work

WORKING AT FEBRUARY 2005

	<i>Managers and administrators</i>	<i>Professionals</i>	<i>Associate professionals</i>	<i>Tradespersons and related workers</i>	<i>Advanced clerical and service workers</i>
	'000	'000	'000	'000	'000
Less than 12 months with employer/business at February 2006	59.4	189.9	128.7	146.2	39.2
Changed employer/business in the last 12 months	54.5	163.8	114.6	135.6	35.6
Whether changed industry(b)(c)					
Same industry as at February 2005	23.2	92.2	55.8	76.0	14.9
Different industry at February 2005 and February 2006	31.3	71.6	58.8	59.6	20.7
Whether changed occupation(c)(d)					
Same occupation as at February 2005	28.3	125.0	54.8	90.1	18.1
Different occupation at February 2005 and February 2006	26.2	38.9	59.7	45.5	17.5
Whether changed usual hours worked(c)					
Same usual hours worked as at February 2005	16.3	55.3	28.6	44.8	11.1
Different usual hours worked at February 2005 and February 2006	38.2	108.6	86.0	90.8	24.5
Whether changed employment type(c)					
Same employment type as at February 2005	35.5	120.3	70.7	84.8	23.9
Different employment type at February 2005 and February 2006	19.0	43.6	43.8	50.7	11.7
Did not change employer/business in the last 12 months	*4.9	26.1	14.1	10.7	*3.6
One year or more with current employer/business Employees(e)	766.2	1 606.5	969.1	1 027.4	341.6
Whether changed occupation(d)(f)					
Same occupation	389.1	1 234.7	645.4	651.5	199.6
Changed occupation	26.8	64.7	47.6	21.0	12.5
Whether changed usual hours worked(f)					
Same usual hours worked	348.7	1 046.9	581.9	583.5	176.2
Changed usual hours worked	50.0	184.6	79.4	54.0	29.1
Varied/did not know	17.2	67.8	31.7	35.0	6.8
Whether promoted and/or transferred(f)					
Promoted or transferred	95.2	275.2	160.6	93.9	32.2
Not promoted or transferred	320.8	1 024.2	532.3	578.6	179.9
Owner managers(g)	350.3	307.0	276.2	354.9	129.5
Total(h)	850.1	1 909.8	1 160.0	1 227.5	402.5

- * estimate has a relative standard error of 25% to 50% and should be used with caution
- (a) From February 2006, the scope of this survey changed to include all persons aged 15 years and over. See paragraph 17 of the Explanatory Notes for more information.
- (b) A change in industry was defined as any change between industry Divisions (ANZSIC).
- (c) Excludes persons who were not working at February 2005 or were not working at February 2006.

- (d) A change in occupation was defined as any change between Major occupation groups (ASCO).
- (e) Excludes 'Owner managers of incorporated enterprises'.
- (f) In the last 12 months.
- (g) Includes owner managers of incorporated and unincorporated enterprises and contributing family workers.
- (h) Includes persons who were not employed at February 2006.

PERSONS WHO WORKED AT SOME TIME DURING THE YEAR ENDING FEBRUARY 2006(a),
Occupation at February 2005—By changes in employer/business or work *continued*

WORKING AT FEBRUARY 2005 *continued*

	Intermediate clerical, sales and service workers	Intermediate production and transport workers	Elementary clerical, sales and service workers	Labourers and related workers	Total	Not working at February 2005	Total
	'000	'000	'000	'000	'000	'000	'000
Less than 12 months with employer/business at February 2006	202.7	102.5	163.2	118.8	1 150.6	962.0	2 112.5
Changed employer/business in the last 12 months	180.1	92.7	148.1	105.1	1 030.2	121.7	1 151.8
Whether changed industry(b)(c)							
Same industry as at February 2005	63.9	38.3	62.6	40.6	467.4	..	467.4
Different industry at February 2005 and February 2006	116.2	54.4	85.5	64.5	562.7	..	562.7
Whether changed occupation(c)(d)							
Same occupation as at February 2005	98.3	54.9	59.4	47.4	576.2	..	576.2
Different occupation at February 2005 and February 2006	81.8	37.9	88.8	57.7	453.9	..	453.9
Whether changed usual hours worked(c)							
Same usual hours worked as at February 2005	37.5	20.5	26.3	21.9	262.3	..	262.3
Different usual hours worked at February 2005 and February 2006	142.6	72.2	121.8	83.2	767.8	..	767.8
Whether changed employment type(c)							
Same employment type as at February 2005	114.0	47.3	91.4	62.4	650.4	..	650.4
Different employment type at February 2005 and February 2006	66.1	45.5	56.7	42.7	379.7	..	379.7
Did not change employer/business in the last 12 months	22.6	9.8	15.1	13.7	120.4	840.3	960.7
One year or more with current employer/business Employees(e)	1 229.6	627.6	646.3	594.3	7 808.6	..	7 808.6
Whether changed occupation(d)(f)							
Same occupation	1 038.3	493.9	576.8	461.6	5 690.8	..	5 690.8
Changed occupation	82.7	29.2	37.2	29.5	351.3	..	351.3
Whether changed usual hours worked(f)							
Same usual hours worked	873.1	416.8	427.7	376.8	4 831.6	..	4 831.6
Changed usual hours worked	183.3	57.8	114.7	60.0	812.9	..	812.9
Varied/did not know	64.6	48.6	71.6	54.3	397.7	..	397.7
Whether promoted and/or transferred(f)							
Promoted or transferred	198.1	65.6	83.8	61.4	1 065.9	..	1 065.9
Not promoted or transferred	922.9	457.5	530.2	429.8	4 976.2	..	4 976.2
Owner managers(g)	108.6	104.6	32.3	103.1	1 766.5	..	1 766.5
Total(h)	1 543.0	774.7	911.7	792.6	9 571.8	1 190.6	10 762.4

.. not applicable

(a) From February 2006, the scope of this survey changed to include all persons aged 15 years and over. See paragraph 17 of the Explanatory Notes for more information.

(b) A change in industry was defined as any change between industry Divisions (ANZSIC).

(c) Excludes persons who were not working at February 2005 or were not working at February 2006.

(d) A change in occupation was defined as any change between Major occupation groups (ASCO).

(e) Excludes 'Owner managers of incorporated enterprises'.

(f) In the last 12 months.

(g) Includes owner managers of incorporated and unincorporated enterprises and contributing family workers.

(h) Includes persons who were not employed at February 2006.

PERSONS WHO WORKED AT SOME TIME DURING THE YEAR ENDING FEBRUARY 2006(a),
Industry at February 2005—By duration with employer/business at February 2006

	LESS THAN 12 MONTHS WITH EMPLOYER/BUSINESS AT FEBRUARY 2006					
	<i>Same industry at February 2006</i>	<i>Different industry at February 2006</i>	<i>Total</i>	<i>One year or more with employer/ business at February 2006</i>	<i>Not working at February 2006</i>	<i>Total</i>
	'000	'000	'000	'000	'000	'000
Working at February 2005	554.5	596.1	1 150.6	7 808.6	612.7	9 571.8
Industry at February 2005						
Agriculture, forestry and fishing	8.1	15.0	23.1	307.9	19.9	350.9
Mining	11.6	10.7	22.3	90.9	5.7	119.0
Manufacturing	51.9	62.2	114.1	874.0	60.9	1 049.0
Electricity, gas and water supply	*1.4	*3.3	*4.8	77.7	*2.7	85.2
Construction	57.2	45.0	102.2	715.2	33.3	850.8
Wholesale trade	14.6	38.6	53.2	331.5	18.6	403.3
Retail trade	97.8	115.9	213.7	1 049.2	122.7	1 385.6
Accommodation, cafes and restaurants	49.7	50.5	100.1	283.7	40.0	423.8
Transport and storage	20.1	23.0	43.1	377.5	23.5	444.1
Communication services	9.9	10.2	20.1	132.9	6.7	159.7
Finance and insurance	20.4	16.3	36.7	319.7	12.1	368.6
Property and business services	74.7	83.0	157.6	892.5	77.1	1 127.2
Government administration and defence	21.8	22.8	44.6	374.6	23.2	442.3
Education	26.8	24.3	51.1	604.9	54.4	710.4
Health and community services	62.4	34.0	96.3	857.9	63.9	1 018.1
Cultural and recreational services	14.6	18.6	33.2	198.5	25.7	257.4
Personal and other services	11.5	22.8	34.3	319.9	22.3	376.5
Not working at February 2005	962.0	. .	228.6	1 190.6
Total	554.5	596.1	2 112.5	7 808.6	841.3	10 762.4

* estimate is subject to sampling variability too high for most practical purposes
. . not applicable

(a) From February 2006, the scope of the survey changed to include all persons aged 15 years and over. See paragraph 17 of the Explanatory Notes for more information.

PERSONS WHO CEASED A JOB INVOLUNTARILY DURING THE YEAR ENDING FEBRUARY
2006(a), Main reason for ceasing last job

Duration of last job	MAIN REASON FOR CEASING LAST JOB			Total
	Retrenched, employer went out of business(b)	Job was temporary or seasonal	Own ill health or injury	
	'000	'000	'000	'000
MALES				
Under 12 months	62.1	121.5	16.5	200.0
Under 3 months	25.3	65.3	5.9	96.4
3 months and under 6 months	15.8	23.9	*3.6	43.2
6 months and under 12 months	21.0	32.4	7.0	60.4
1 year and under 2 years	22.2	17.9	7.4	47.5
2 years and under 3 years	13.5	7.3	*5.0	25.8
3 years and under 5 years	13.3	7.9	*4.9	26.1
5 years and under 10 years	12.5	*5.2	*4.6	22.2
10 years and under 20 years	9.6	*2.6	*4.3	16.5
20 years and over	6.4	**1.1	*3.7	11.2
Total	139.5	163.4	46.4	349.3
FEMALES				
Under 12 months	45.7	117.2	15.5	178.3
Under 3 months	20.0	66.4	*5.5	91.9
3 months and under 6 months	9.4	23.6	*4.9	38.0
6 months and under 12 months	16.2	27.1	*5.1	48.4
1 year and under 2 years	11.7	12.7	*4.9	29.3
2 years and under 3 years	9.0	10.2	5.9	25.1
3 years and under 5 years	9.0	5.7	*4.3	19.1
5 years and under 10 years	8.9	6.7	*4.7	20.3
10 years and under 20 years	6.7	*4.3	*5.1	16.1
20 years and over	*1.7	**0.8	*1.7	*4.2
Total	92.8	157.6	42.0	292.4
PERSONS				
Under 12 months	107.7	238.7	31.9	378.4
Under 3 months	45.4	131.7	11.4	188.4
3 months and under 6 months	25.2	47.5	8.5	81.2
6 months and under 12 months	37.2	59.5	12.1	108.8
1 year and under 2 years	33.9	30.5	12.3	76.8
2 years and under 3 years	22.5	17.5	10.9	50.9
3 years and under 5 years	22.3	13.7	9.2	45.1
5 years and under 10 years	21.4	11.9	9.2	42.5
10 years and under 20 years	16.3	6.9	9.4	32.6
20 years and over	8.1	*1.8	*5.4	15.4
Total	232.3	321.0	88.4	641.7

* estimate has a relative standard error of 25% to 50% and should be used with caution

** estimate has a relative standard error greater than 50% and is considered too unreliable for general use

(a) From February 2006, the scope of this survey changed to include all persons aged 15 years and over. See paragraph 17 of the Explanatory Notes for more information.

(b) Includes all persons who were made redundant, dismissed or had no work available.

MAIN REASON FOR CEASING LAST JOB

Duration of last job	Unsatisfactory work conditions	Holiday job, returned to studies	Retired, new business, better job, family or other reasons(b)	Total
	'000	'000	'000	'000
MALES				
Under 12 months	70.9	21.2	125.8	217.9
Under 3 months	29.3	8.9	43.2	81.4
3 months and under 6 months	18.2	6.2	31.3	55.7
6 months and under 12 months	23.4	6.1	51.3	80.8
1 year and under 2 years	30.8	9.0	84.5	124.4
2 years and under 3 years	16.5	*1.4	63.6	81.5
3 years and under 5 years	12.8	*3.4	62.8	79.1
5 years and under 10 years	12.7	*2.0	67.2	81.9
10 years and under 20 years	*5.0	—	35.4	40.4
20 years and over	*1.6	—	19.4	21.1
Total	150.5	37.0	458.8	646.2
FEMALES				
Under 12 months	73.5	27.3	142.6	243.4
Under 3 months	26.4	9.1	47.1	82.6
3 months and under 6 months	18.2	8.4	33.4	60.0
6 months and under 12 months	28.9	9.7	62.1	100.7
1 year and under 2 years	29.3	10.0	93.9	133.2
2 years and under 3 years	13.8	*4.8	70.8	89.4
3 years and under 5 years	13.8	6.5	78.9	99.2
5 years and under 10 years	12.4	*2.6	67.2	82.2
10 years and under 20 years	*3.9	**0.6	42.9	47.4
20 years and over	—	—	10.4	10.4
Total	146.7	51.8	506.7	705.2
PERSONS				
Under 12 months	144.4	48.5	268.4	461.3
Under 3 months	55.7	18.0	90.3	164.0
3 months and under 6 months	36.4	14.6	64.7	115.7
6 months and under 12 months	52.3	15.8	113.4	181.5
1 year and under 2 years	60.2	19.0	178.4	257.6
2 years and under 3 years	30.4	6.2	134.4	170.9
3 years and under 5 years	26.6	9.9	141.7	178.3
5 years and under 10 years	25.1	*4.6	134.4	164.1
10 years and under 20 years	8.9	**0.6	78.3	87.8
20 years and over	*1.6	—	29.9	31.5
Total	297.2	88.8	965.4	1 351.4

* estimate has a relative standard error of 25% to 50% and should be used with caution

** estimate has a relative standard error greater than 50% and is considered too unreliable for general use

— nil or rounded to zero (including null cells)

(a) From February 2006, the scope of this survey changed to include all persons aged 15 years and over. See paragraph 17 of the Explanatory Notes for more information.

(b) Includes persons whose business closed or was sold for other reasons.

	NSW	Vic.	Qld	SA	WA	Tas.	NT(b)	ACT	Aust.
	'000	'000	'000	'000	'000	'000	'000	'000	'000
MALES									
Population 1: Persons who worked at some time during the year ending February 2006	1 901.9	1 457.6	1 151.0	434.3	619.1	129.0	46.1	100.0	5 839.1
Population 2: Persons who were working at February 2006	1 786.7	1 366.9	1 079.0	405.5	581.3	121.1	43.3	94.5	5 478.1
Population 3: Employees (excluding owner managers of incorporated enterprises) who had worked with their current employer for one year or more	1 058.3	793.3	601.8	248.6	315.0	74.5	25.2	61.4	3 178.1
Population 4: Persons who ceased a job during the year ending February 2006	299.2	225.2	230.4	72.4	120.8	19.0	9.4	19.0	995.6
Population 5: Persons who ceased a job during the year ending February 2006 and were working at February 2006	184.0	134.5	158.4	43.6	82.9	11.1	6.5	13.5	634.6
Population 6: Persons who were working at February 2005	1 725.1	1 314.3	1 039.7	395.6	551.0	117.0	41.8	91.0	5 275.6
Population 7: Persons who were working at February 2005 and at February 2006	1 637.5	1 249.6	989.4	375.3	525.1	111.0	39.9	87.7	5 015.6
Population 8: Persons who had worked with their employer/business at February 2006 for one year or more	1 456.8	1 112.1	832.0	333.8	445.3	100.1	33.2	73.6	4 387.0
Population 9: Employees at February 2006 (excluding owner managers of incorporated enterprises) with paid leave entitlements	1 086.8	821.4	637.2	236.8	341.8	71.0	27.2	63.3	3 285.5
Population 10: Employees at February 2006 (excluding owner managers of incorporated enterprises) without paid leave entitlements	266.6	194.5	179.6	75.5	91.6	22.3	7.2	17.0	854.3

- (a) From February 2006, the scope of this survey changed to include all persons aged 15 years and over. See paragraph 17 of the Explanatory Notes for more information.
 (b) Refers to mainly urban areas only. For more information see paragraph 6 of the Explanatory Notes.

	NSW	Vic.	Qld	SA	WA	Tas.	NT(b)	ACT	Aust.
	'000	'000	'000	'000	'000	'000	'000	'000	'000
FEMALES									
Population 1: Persons who worked at some time during the year ending February 2006	1 590.6	1 229.4	980.5	370.7	505.1	112.4	42.1	92.6	4 923.3
Population 2: Persons who were working at February 2006	1 444.2	1 122.0	873.1	334.7	448.5	99.2	37.0	84.3	4 443.0
Population 3: Employees (excluding owner managers of incorporated enterprises) who had worked with their current employer for one year or more	950.6	746.2	522.9	229.5	265.0	65.4	22.8	61.6	2 864.0
Population 4: Persons who ceased a job during the year ending February 2006	299.3	223.7	233.4	69.0	118.6	22.3	12.3	19.1	997.6
Population 5: Persons who ceased a job during the year ending February 2006 and were working at February 2006	152.9	116.3	126.0	33.0	62.0	9.1	7.3	10.7	517.3
Population 6: Persons who were working at February 2005	1 392.8	1 076.1	843.1	332.7	432.6	97.7	37.0	84.2	4 296.2
Population 7: Persons who were working at February 2005 and at February 2006	1 284.3	1 000.2	768.2	304.7	387.8	87.6	33.0	77.8	3 943.5
Population 8: Persons who had worked with their employer/business at February 2006 for one year or more	1 130.2	879.2	644.8	271.5	325.5	77.8	25.7	66.8	3 421.6
Population 9: Employees at February 2006 (excluding owner managers of incorporated enterprises) with paid leave entitlements	900.1	719.2	492.3	191.1	266.3	55.9	25.3	62.6	2 712.8
Population 10: Employees at February 2006 (excluding owner managers of incorporated enterprises) without paid leave entitlements	341.6	254.6	240.1	96.4	115.3	28.9	8.3	15.6	1 100.9

- (a) From February 2006, the scope of this survey changed to include all persons aged 15 years and over. See paragraph 17 of the Explanatory Notes for more information.
- (b) Refers to mainly urban areas only. For more information see paragraph 6 of the Explanatory Notes.

	NSW	Vic.	Qld	SA	WA	Tas.	NT(b)	ACT	Aust.
	'000	'000	'000	'000	'000	'000	'000	'000	'000
PERSONS									
Population 1: Persons who worked at some time during the year ending February 2006	3 492.4	2 687.0	2 131.6	805.0	1 124.2	241.4	88.2	192.6	10 762.4
Population 2: Persons who were working at February 2006	3 230.9	2 488.9	1 952.1	740.2	1 029.8	220.2	80.3	178.7	9 921.1
Population 3: Employees (excluding owner managers of incorporated enterprises) who had worked with their current employer for one year or more	2 008.8	1 539.5	1 124.7	478.1	580.0	139.9	48.0	123.1	6 042.1
Population 4: Persons who ceased a job during the year ending February 2006	598.4	448.9	463.8	141.5	239.3	41.4	21.7	38.1	1 993.1
Population 5: Persons who ceased a job during the year ending February 2006 and were working at February 2006	336.9	250.8	284.4	76.6	144.9	20.2	13.8	24.2	1 151.8
Population 6: Persons who were working at February 2005	3 117.9	2 390.4	1 882.8	728.3	983.6	214.7	78.8	175.3	9 571.8
Population 7: Persons who were working at February 2005 and at February 2006	2 921.8	2 249.9	1 757.6	680.0	912.9	198.6	72.9	165.6	8 959.2
Population 8: Persons who had worked with their employer/business at February 2006 for one year or more	2 587.0	1 991.4	1 476.7	605.3	770.8	178.0	58.9	140.5	7 808.6
Population 9: Employees at February 2006 (excluding owner managers of incorporated enterprises) with paid leave entitlements	1 987.0	1 540.6	1 129.6	427.8	608.1	126.9	52.4	125.9	5 998.2
Population 10: Employees at February 2006 (excluding owner managers of incorporated enterprises) without paid leave entitlements	608.2	449.1	419.8	171.8	206.9	51.3	15.5	32.6	1 955.2

- (a) From February 2006, the scope of this survey changed to include all persons aged 15 years and over. See paragraph 17 of the Explanatory Notes for more information.
- (b) Refers to mainly urban areas only. For more information see paragraph 6 of the Explanatory Notes.

EXPLANATORY NOTES

INTRODUCTION

1 The statistics in this survey were compiled from data collected in the Labour Mobility survey that was conducted throughout Australia in February 2006 as a supplement to the Australian Bureau of Statistics (ABS) monthly Labour Force Survey (LFS). Respondents to the LFS who fell within the scope of the supplementary survey were asked further questions.

2 The publication *Labour Force, Australia* (cat. no. 6202.0) contains information about survey design, sample redesign, scope, coverage and population benchmarks relevant to the monthly LFS, which also apply to supplementary surveys. It also contains definitions of demographic and labour force characteristics, and information about telephone interviewing which are relevant to both the monthly LFS and supplementary surveys.

CONCEPTS, SOURCES AND METHODS

3 The conceptual framework used in Australia's LFS aligns closely with the standards and guidelines set out in Resolutions of the International Conference of Labour Statisticians. Descriptions of the underlying concepts and structure of Australia's labour force statistics, and the sources and methods used in compiling these estimates, are presented in *Labour Statistics: Concepts, Sources and Methods* (cat. no. 6102.0.55.001) which is available on the ABS web site <<http://www.abs.gov.au>> (Methods, Classifications, Concepts and Standards).

SCOPE

4 The scope of the LFS was restricted to people aged 15 years and over and excludes the following people:

- members of the permanent defence forces
- certain diplomatic personnel of overseas governments, customarily excluded from the census and estimated population counts
- overseas residents in Australia
- members of non-Australian defence forces (and their dependants).

5 Students at boarding schools, patients in hospitals, residents of homes (e.g. retirement homes, homes for people with disabilities), and inmates of prisons are excluded from all supplementary surveys.

6 This supplementary survey was conducted in both urban and rural areas in all states and territories, but excluded approximately 120,000 people living in very remote parts of Australia who would otherwise have been within the scope of the survey. The exclusion of these people will have only a minor impact on any aggregate estimates that are produced for individual states and territories, except the Northern Territory where such people account for around 23% of the population.

COVERAGE

7 The estimates in this survey relate to people covered by the survey in February 2006. In the LFS, coverage rules are applied which aim to ensure that each person is associated with only one dwelling, and hence has only one chance of selection in the survey. See *Labour Force, Australia* (cat. no. 6202.0) for more details.

SAMPLE SIZE

8 Supplementary surveys are not always conducted on the full LFS sample. Since August 1994 the sample for supplementary surveys has been restricted to no more than seven-eighths of the LFS sample.

9 The initial sample for the February 2006 LFS consisted of 41,511 private dwelling households and special dwelling units. Of the 33,958 private dwelling households and special dwelling units that remained in the survey after sample loss (e.g. households selected in the survey which had no residents in scope for the LFS, vacant or derelict dwellings and dwellings under construction), approximately 31,616 or 93.1% were fully responding to the Labour Mobility survey. The number of completed interviews obtained from these private dwellings and special dwelling units (after taking into account scope, coverage and subsampling exclusions) was 35,637.

EXPLANATORY NOTES *continued*

RELIABILITY OF THE ESTIMATES

- 10** Estimates in this publication are subject to sampling and non-sampling errors:
- Sampling error is the difference between the published estimate and the value that would have been produced if all dwellings had been included in the survey. For more information see the Technical Note.
 - Non-sampling errors are inaccuracies that occur because of imperfections in reporting by respondents and interviewers, and errors made in coding and processing data. These inaccuracies may occur in any enumeration, whether it be a full count or a sample. Every effort is made to reduce the non-sampling error to a minimum by careful design of questionnaires, intensive training and supervision of interviewers and effective processing procedures.

SEASONAL FACTORS

- 11** The estimates are based on information collected in the survey month and, due to seasonal factors, may not be representative of other months of the year.

CLASSIFICATIONS USED

- 12** Country of birth data are classified according to the *Standard Australian Classification of Countries (SACC), 1998* (cat. no. 1269.0).
- 13** Occupation data are classified according to the *ASCO — Australian Standard Classification of Occupations, Second Edition, 1997* (cat. no. 1220.0).
- 14** Industry data are classified according to the *Australian and New Zealand Standard Industrial Classification (ANZSIC), 1993* (cat. no. 1292.0).
- 15** Educational attainment data are classified according to *Australian Standard Classification of Education (ASCED)* (cat. no. 1272.0).

COMPARABILITY OF TIME SERIES

- 16** Revisions are made to population benchmarks for the LFS after each five-yearly Census of Population and Housing. The last such revision was made in February 2004 to take account of the results of the 2001 Census of Population and Housing. Estimates from supplementary surveys conducted from and including February 2004 are therefore based on the revised population benchmarks.

- 17** The scope of the Labour Mobility survey was expanded in February 2006 to include all people aged 15 years and over. This change has resulted in an extra 73,300 people coming within the scope of this survey. The survey was also redesigned and data items and populations that referred to locality, which were included in the February 2004 and previous surveys, are not presented in this publication as the information was not collected in the February 2006 survey.

- 18** Only changes in employer/business are included in Table 1, as this is the only type of job change which is common to February 2006 and previous surveys, because in Labour Mobility surveys prior to 2006 changes in locality in the last 12 months were also included as a job change. As a result of the changes made to the 2006 Labour Mobility survey, users need to exercise care when comparing the estimates in this publication with previous releases.

COMPARABILITY WITH MONTHLY LFS STATISTICS

- 19** Due to differences in the scope and sample size of this supplementary survey and that of the monthly LFS, the estimation procedure may lead to some small variations between labour force estimates from this survey and those from the LFS.

PREVIOUS SURVEYS

- 20** Results of similar surveys, conducted in November 1972, February 1975 and February 1976, annually from February 1979 to February 1992, then biennially from February 1994 to February 2004, were published in *Labour Mobility, Australia* (cat. no. 6209.0).

EXPLANATORY NOTES *continued*

PREVIOUS REVISIONS TO HISTORICAL DATA

21 Historical estimates of the number and proportion of people who were job mobile for the periods 1990 to 1996 were revised in the 1998 publication. Previously published estimates for reference periods from 1990 to 1996 will still contain incorrectly derived data. If you require further information about these revisions, please contact the area listed on the front cover of this release.

NEXT SURVEY

22 The ABS plans to conduct this survey again in February 2008.

ACKNOWLEDGEMENT

23 ABS publications draw extensively on information provided freely by individuals, businesses, governments and other organisations. Their continued cooperation is very much appreciated: without it, the wide range of statistics published by the ABS would not be available. Information received by the ABS is treated in strict confidence as required by the Census and Statistics Act 1905.

RELATED PUBLICATIONS

24 Other ABS publications which may be of interest include:

- *Australian Labour Market Statistics*, (cat. no. 6105.0)
- *Labour Force, Australia*, (cat. no. 6202.0)
- *Labour Force Experience, Australia*, (cat. no. 6206.0)
- *Persons Not in the Labour Force, Australia*, (cat. no. 6220.0)
- *Job Search Experience, Australia*, (cat. no. 6222.0)
- *Underemployed Workers, Australia*, (cat. no. 6265.0)

25 Current publications and other products released by the ABS are listed in the *Catalogue of Publications and Products* (cat. no. 1101.0). The Catalogue is available from the ABS web site <<http://www.abs.gov.au>>. The ABS also issues a daily Release Advice on the web site which details products to be released in the week ahead.

APPENDIX 1 POPULATIONS AND DATA ITEMS LIST

DATA AVAILABLE ON REQUEST

The ABS has a range of data available on request from the Labour Mobility survey. This section lists the data items and populations which relate to the survey. More detailed breakdowns of some data items may also be available on request.

The population(s) for a particular data item refers to the persons in the survey to whom the data item relates. Where alternative output categories are available for the same data item, these are shown and the data item name is followed by a bracketed numeral (e.g. Country of birth (2)).

For more information about ABS data available on request, contact Catherine Toet on Canberra (02) 6252 7636, or by facsimile on (02) 6252 7512, or by email to <c.toet@abs.gov.au>.

- Population 1:* Persons who worked at some time during the year ending February 2006.
- Population 2:* Persons who were working at February 2006.
- Population 3:* Employees (excluding owner managers of incorporated enterprises) who had worked with their current employer for one year or more.
- Population 4:* Persons who ceased a job during the year ending February 2006.
- Population 5:* Persons who ceased a job during the year ending February 2006 and were working at February 2006.
- Population 6:* Persons who were working at February 2005.
- Population 7:* Persons who were working at February 2005 and at February 2006.
- Population 8:* Persons who had worked with their employer/business at February 2006 for one year or more.
- Population 9:* Employees at February 2006 (excluding owner managers of incorporated enterprises) with paid leave entitlements.
- Population 10:* Employees at February 2006 (excluding owner managers of incorporated enterprises) without paid leave entitlements.

APPENDIX 1 POPULATIONS AND DATA ITEMS LIST *continued*

<i>Data items</i>	<i>Population</i>	<i>Data items</i>	<i>Population</i>
1 State or territory of usual residence	All	7B Country of birth (1)	All
New South Wales		Born in Australia	
Victoria		Born overseas	
Queensland		Born in main	
South Australia		English-speaking	
Western Australia		countries	
Tasmania		Born in other than main	
Northern Territory		English-speaking	
Australian Capital Territory		countries	
2 Area of usual residence	All	7C Country of birth (2)	All
State capital city		Born in Australia	
Balance of state/territory		Born overseas	
3 Region of usual residence	All	Oceania and Antarctica	
Standard labour force		North-West Europe	
dissemination regions		Southern and Eastern	
4 Sex	All	Europe	
Males		North Africa and the Middle	
Females		East	
5 Marital status	All	South-East Asia	
Married		North-East Asia	
Not married		Southern and Central Asia	
6 Relationship in household	All	Americas	
Family member		Sub-Saharan Africa	
Husband, wife or partner		8 Age group (years)	All
With dependants		15–19	
Without dependants		20–24	
Lone parent		25–34	
With dependants		35–44	
Without dependants		45–54	
Dependent student		55–59	
Non-dependent child		60–64	
Other family person		65 and over	
Non-family member		Note: Age collected in single	
Lone person		years.	
Not living alone		9 Level of highest educational	All
Relationship not determined		attainment	
7A Country of birth and period of arrival	All	Postgraduate Degree	
Born in Australia		Graduate Diploma/Graduate	
Born overseas		Certificate	
Arrived before 1971		Bachelor Degree	
Arrived 1971–1980		Advanced Diploma/Diploma	
Arrived 1981–1990		Certificate III/IV	
Arrived 1991–2000		Certificate I/II	
Arrived 2001 to survey		Certificate not further defined	
date		Year 12	
		Year 11	
		Year 10 or below	
		Level not determined	
		No educational	
		attainment/attendance	

APPENDIX 1 POPULATIONS AND DATA ITEMS LIST *continued*

<i>Data items</i>	<i>Population</i>	<i>Data items</i>	<i>Population</i>
10A Level of highest non-school qualification With a non-school qualification Postgraduate Degree Graduate Diploma/Graduate Certificate Bachelor Degree Advanced Diploma/Diploma Certificate III/IV Certificate I/II Certificate not further defined Level not determined Without a non-school qualification	All	13B Change in work Same employer for one year or more Employees (excluding OMIEs) with some change in work Employees (excluding OMIEs) with no change in work Owner managers and contributing family workers	3,8
10B Highest year of school completed Year 12 Year 11 Year 10 Year 9 Year 8 or below Never attended school	All	14 Whether changed employer/business in the last 12 months Changed employer/business Did not change employer/business	All
11 Labour force status at February 2006 Employed Unemployed Not in the labour force	All	15 Whether working at February 2006 Working Not working	All
12 Number of employers or businesses in the last 12 months One Two Three Four or more	All	16 Status in employment at February 2006 Employees Employers Own account workers Contributing family workers	All
13A Change of employer/business Changed employer/business in the last 12 months 1 change in employer/business 2 changes in employer/business 3 or more changes in employer/business Did not change employer/business in the last 12 months or currently not employed	4,5	17 Full-time or part-time status at February 2006 Full-time workers Part-time workers	2,3,5,7-10
		18 Usual hours worked at February 2006 1-19 20-29 30-34 35-39 40 41-44 45-48 49 or more Less than 1 hour or no hours worked Note: Collected in single hours.	All
		19 Employment type at February 2006 Employees (excluding OMIEs) With paid leave entitlements Without paid leave entitlements	2,3,5,7-10

APPENDIX 1 POPULATIONS AND DATA ITEMS LIST *continued*

<i>Data items</i>	<i>Population</i>	<i>Data items</i>	<i>Population</i>
19 Employment type at February 2006 <i>cont.</i>	2,3,5,7-10	22 Industry at February 2006 <i>cont.</i>	2,3,5,7-10
Owner managers of incorporated enterprises		Retail trade	
Owner managers of unincorporated enterprises		Accommodation, cafes and restaurants	
Contributing family workers		Transport and storage	
		Communication services	
20A Duration with employer/business at February 2006 (1)	2,3,5,7-10	Finance and insurance	
Under 12 months		Property and business services	
Under 3 months		Government administration and defence	
3 and under 6 months		Education	
6 and under 12 months		Health and community services	
1 and under 2 years		Cultural and recreational services	
2 and under 3 years		Personal and other services	
3 and under 5 years		23 Whether changed occupation with current employer/business in the last 12 months	3
5 and under 10 years		Same occupation	
10 and under 20 years		Changed occupation	
20 years and over		24 Previous occupation with current employer/business	8
20B Duration with employer/business at February 2006 (2)	2,3,5,7-10	Managers and administrators	
Less than 12 months with current employer/business		Professionals	
One year or more with current employer/business		Associate professionals	
21 Occupation at February 2006	2,3,5,7-10	Tradespersons and related workers	
Managers and administrators		Advanced clerical and service workers	
Professionals		Intermediate clerical, sales and service workers	
Associate professionals		Intermediate production and transport workers	
Tradespersons and related workers		Elementary clerical, sales and service workers	
Advanced clerical and service workers		Labourers and related workers	
Intermediate clerical, sales and service workers		25A Whether changed usual hours worked with current employer/business in the last 12 months - Employees (excluding OMIEs)	3
Intermediate production and transport workers		Same usual hours worked	
Elementary clerical, sales and service workers		Changed usual hours worked	
Labourers and related workers		Changed hours still full time	
22 Industry at February 2006	2,3,5,7-10	Changed hours still part time	
Agriculture, forestry and fishing		Full time to part time	
Mining		Part time to full time	
Manufacturing		Varied/did not know	
Electricity, gas and water supply			
Construction			
Wholesale trade			

APPENDIX 1 POPULATIONS AND DATA ITEMS LIST *continued*

<i>Data items</i>	<i>Population</i>	<i>Data items</i>	<i>Population</i>
25B Whether changed usual hours worked with current employer/business in the last 12 months - Owner managers and contributing family workers Same usual hours worked Changed usual hours worked Changed hours still full time Changed hours still part time Full time to part time Part time to full time Varied/did not know	3	31 Whether transferred with current employer in the last 12 months Transferred Not transferred	3
26 Previous usual hours worked with current employer/business 1-19 20-29 30-34 35-39 40 41-44 45-48 49 or more Less than 1 hour or no hours worked Note: Collected in single hours.	All	32 Whether promoted and/or transferred with current employer in the last 12 months Promoted and/or transferred Not promoted and/or transferred	3
27 Whether entitled to paid sick leave at February 2006 Entitled to paid sick leave Not entitled to paid sick leave Did not know	3,9-10	33 Reason for ceasing last job Job losers Retrenched, made redundant, employer went out of business, dismissed, no work was available Job was temporary or seasonal Own health or injury Job leavers Unsatisfactory work conditions Holiday job, returned to studies Retired New business, better job, family or other reasons Business closed or sold for other reasons	4,5
28 Whether entitled to paid holiday leave at February 2006 Entitled to paid holiday leave Not entitled to paid holiday leave Did not know	3,9-10	34 Usual hours worked in last job 1-19 20-29 30-34 35-39 40 41-44 45-48 49 or more Less than 1 hour or no hours worked Note: Collected in single hours.	All
29 Whether had paid leave entitlements at February 2006 Had paid leave entitlements Did not have paid leave entitlements	3,9-10	35 Employment type in last job Employees (excluding OMIEs) With paid leave entitlements Without paid leave entitlements Owner managers of incorporated enterprises Owner managers of unincorporated enterprises Contributing family workers	4,5
30 Whether promoted with current employer in the last 12 months Promoted Not promoted	3		

APPENDIX 1 POPULATIONS AND DATA ITEMS LIST *continued*

<i>Data items</i>	<i>Population</i>	<i>Data items</i>	<i>Population</i>
36 Duration of last job	4,5	43 Industry of last job cont.	4,5
Under 12 months		Mining	
Under 3 months		Manufacturing	
3 and under 6 months		Electricity, gas and water supply	
6 and under 12 months		Construction	
1 and under 2 years		Wholesale trade	
2 and under 3 years		Retail trade	
3 and under 5 years		Accommodation, cafes and restaurants	
5 and under 10 years		Transport and storage	
10 and under 20 years		Communication services	
20 years and over		Finance and insurance	
37 When began last job	4,5	Property and business services	
Began last job more than one year ago		Government administration and defence	
Began and ceased a job in the last 12 months		Education	
38 Whether changed occupation (last to current employer/business)	5	Health and community services	
Same occupation		Cultural and recreational services	
Changed occupation		Personal and other services	
39 Whether changed industry (last to current employer/business)	5	44 Whether entitled to paid sick leave in last job	4,5
Same industry		Entitled to paid sick leave	
Changed industry		Not entitled to paid sick leave	
40 Whether changed employment type (last to current employer/business)	5	Did not know	
Same employment type		45 Whether entitled to paid holiday leave in last job	4,5
Changed employment type		Entitled to paid holiday leave	
41 Whether changed usual hours worked (last to current employer/business)	4,5	Not entitled to paid holiday leave	
Same usual hours worked		Did not know	
Changed usual hours worked		46 Whether had paid leave entitlements in last job	4,5
Currently not employed		Had paid leave entitlements	
42 Occupation of last job	4,5	Did not have paid leave entitlements	
Managers and administrators		47 Whether working at February 2005	3-8
Professionals		Working	
Associate professionals		Not working	
Tradespersons and related workers		48 Usual hours worked at February 2005	All
Advanced clerical and service workers		1-19	
Intermediate clerical, sales and service workers		20-29	
Intermediate production and transport workers		30-34	
Elementary clerical, sales and service workers		35-39	
Labourers and related workers		40	
43 Industry of last job	4,5	41-44	
Agriculture, forestry and fishing		45-48	
		49 or more	
		Less than 1 hour or no hours worked	
		Note: Collected in single hours.	

APPENDIX 1 POPULATIONS AND DATA ITEMS LIST *continued*

<i>Data items</i>	<i>Population</i>	<i>Data items</i>	<i>Population</i>
49 Employment type at February 2005	3,6-8	54 Occupation at February 2005	3,6-8
Employees (excluding OMIEs)		<i>cont.</i>	
With paid leave entitlements		Elementary clerical, sales and service workers	
Without paid leave entitlements		Labourers and related workers	
Owner managers of incorporated enterprises		55 Industry at February 2005	3,6-8
Owner managers of unincorporated enterprises		Agriculture, forestry and fishing	
Contributing family workers		Mining	
50 Whether changed occupation (February 2005 and February 2006)	3,7,8	Manufacturing	
Same occupation		Electricity, gas and water supply	
Different occupation		Construction	
51 Whether changed industry (February 2005 and February 2006)	3,7,8	Wholesale trade	
Same industry		Retail trade	
Different industry		Accommodation, cafes and restaurants	
52 Whether changed employment type (February 2005 and February 2006)	3,7,8	Transport and storage	
Same employment type		Communication services	
Different employment type		Finance and insurance	
53 Whether changed usual hours worked (February 2005 and February 2006)	3	Property and business services	
Same usual hours worked		Government administration and defence	
Different usual hours worked		Education	
Currently not employed		Health and community services	
54 Occupation at February 2005	3,6-8	Cultural and recreational services	
Managers and administrators		Personal and other services	
Professionals		56 Whether entitled to paid sick leave at February 2005	3
Associate professionals		Entitled to paid sick leave	
Tradespersons and related workers		Not entitled to paid sick leave	
Advanced clerical and service workers		Did not know	
Intermediate clerical, sales and service workers		57 Whether entitled to paid holiday leave at February 2005	3
Intermediate production and transport workers		Entitled to paid holiday leave	
		Not entitled to paid holiday leave	
		Did not know	
		58 Whether had paid leave entitlements at February 2005	3
		Had paid leave entitlements	
		Did not have paid leave entitlements	

APPENDIX 2 SUPPLEMENTARY SURVEYS

SUPPLEMENTARY SURVEYS

The Monthly Population Survey program collects data on particular aspects of the labour force. The following is an historical list of supplementary surveys to the monthly labour force survey. Data from these surveys are available on request and can be obtained by contacting the ABS.

	<i>cat. no.</i>	<i>Frequency</i>	<i>Latest issue</i>
Barriers and Incentives to Labour Force Participation, Australia	6239.0	Biennial	2004–2005
Career Experience, Australia	6254.0	Discontinued	November 2002
Career Paths of Persons with Trade Qualifications, Australia	6243.0	Discontinued	Final issue 1993
Child Care, Australia	4402.0	Irregular	June 2005
Child Employment, Australia	6211.0	Irregular	June 2006
Education and Work, Australia	6227.0	Annual	May 2006
Employee Earnings, Benefits, and Trade Union Membership, Australia	6310.0	Annual	August 2006
Forms of Employment, Australia	6359.0	Annual	November 2006
Job Search Experience, Australia	6222.0	Annual	July 2006
Labour Force Experience, Australia	6206.0	Biennial	February 2007
Labour Force Status and Educational Attainment, Australia	6235.0	Discontinued	Final issue 1994
Labour Force Status and Other Characteristics of Families, Australia(a)	6224.0	Discontinued	Final issue 2000
Labour Force Status and Other Characteristics of Migrants, Australia	6250.0	Irregular	November 2004
Labour Mobility, Australia	6209.0	Biennial	February 2006
Locations of Work, Australia	6275.0	Irregular	November 2005
Multiple Jobholding, Australia(b)	6216.0	Irregular	August 1997
Participation in Education, Australia	6272.0	Discontinued	Final issue 1999
Persons Not in the Labour Force, Australia	6220.0	Annual	September 2006
Persons Who had Re-entered the Labour Force, Australia	6264.0.40.001	Discontinued	Final issue 1995
Persons Who Have Left the Labour Force, Australia	6267.0.40.001	Discontinued	Final issue 1994
Retirement and Retirement Intentions, Australia	6238.0	Biennial	2004–2005
Retrenchment and Redundancy, Australia	6266.0	Discontinued	July 2001
Successful and Unsuccessful Job Search Experience, Australia	6245.0	Discontinued	Final issue 2000
Superannuation, Australia	6319.0	Discontinued	Final issue 1995
Underemployed Workers, Australia	6265.0	Annual	September 2006
Working Time Arrangements, Australia	6342.0	Irregular	November 2006
Work-Related Injuries, Australia	6324.0	Irregular	2005–2006

(a) Latest data available June 2006, from the ABS website cat. no. 6224.0.55.001 annual, or on request.

(b) Latest data available on request July 2001.

INTRODUCTION

1 Since the estimates in this publication are based on information obtained from occupants of a sample of dwellings, they are subject to sampling variability. That is, they may differ from those estimates that would have been produced if all dwellings had been included in the survey. One measure of the likely difference is given by the standard error (SE), which indicates the extent to which an estimate might have varied by chance because only a sample of dwellings was included. There are about two chances in three (67%) that a sample estimate will differ by less than one SE from the number that would have been obtained if all dwellings had been included, and about 19 chances in 20 (95%) that the difference will be less than two SEs. Another measure of the likely difference is the relative standard error (RSE), which is obtained by expressing the SE as a percentage of the estimate.

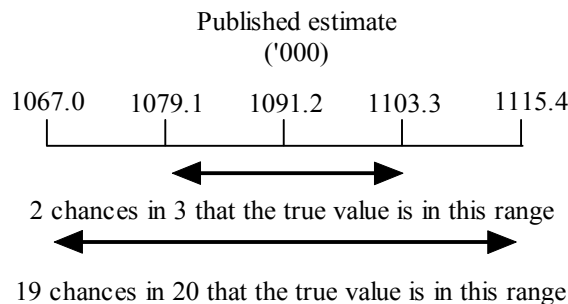
2 Due to space limitations, it is impractical to print the SE of each estimate in the publication. Instead, a table of SEs is provided to enable readers to determine the SE for an estimate from the size of that estimate (see table T1). The SE table is derived from a mathematical model, referred to as the 'SE model', which is created using data from a number of past Labour Force Surveys. It should be noted that the SE model only gives an approximate value for the SE for any particular estimate, since there is some minor variation between SEs for different estimates of the same size.

CALCULATION OF STANDARD ERROR

3 An example of the calculation and the use of SEs in relation to estimates of people is as follows. Table 3 shows the estimated number of males who, in February 2006, had been with their current employer/business for less than 12 months is 1,091,200. Since this estimate is between 1,000,000 and 2,000,000, table T1 shows that the SE for Australia will lie between 11,600 and 17,150 and can be approximated by interpolation using the following general formula:

$$\begin{aligned}
 & SE \text{ of estimate} \\
 &= \text{lower SE} + \left(\frac{\text{size of estimate} - \text{lower estimate}}{\text{upper estimate} - \text{lower estimate}} \right) \times (\text{upper SE} - \text{lower SE}) \\
 &= 11,600 + \left(\frac{1,091,200 - 1,000,000}{2,000,000 - 1,000,000} \right) \times (17,150 - 11,600) \\
 &= 12,100 \text{ (rounded to the nearest 100)}
 \end{aligned}$$

4 Therefore, there are about two chances in three that the value that would have been produced if all dwellings had been included in the survey will fall within the range 1,079,100 to 1,103,300 and about 19 chances in 20 that the value will fall within the range 1,067,000 to 1,115,400. This example is illustrated in the following diagram.



5 In general, the size of the SE increases as the size of the estimate increases. Conversely, the RSE decreases as the size of the estimate increases. Very small estimates are thus subject to such high RSEs that their value for most practical purposes is unreliable. In the tables in this publication, only estimates with RSEs of 25% or less are considered reliable for most purposes. Estimates with RSEs greater than 25% but less than or equal to 50% are preceded by an asterisk (e.g. *3.4) to indicate they are subject

CALCULATION OF STANDARD
ERROR *continued*

to high SEs and should be used with caution. Estimates with RSEs of greater than 50%, preceded by a double asterisk (e.g. **0.3), are considered too unreliable for general use and should only be used to aggregate with other estimates to provide derived estimates with RSEs of less than 25%.

PROPORTIONS AND
PERCENTAGES

6 Proportions and percentages formed from the ratio of two estimates are also subject to sampling errors. The size of the error depends on the accuracy of both the numerator and the denominator. A formula to approximate the RSE of a proportion is given below. This formula is only valid when x is a subset of y.

$$RSE\left(\frac{x}{y}\right) = \sqrt{[RSE(x)]^2 - [RSE(y)]^2}$$

7 Considering the example from the previous page, the 1,091,200 males who in February 2006 had been with their current employer/business for less than 12 months represent 19.9% of the 5,478,100 males working at February 2006. The SE of 5,478,100 may be calculated by interpolation as 30,200. To convert this to an RSE we express the SE as a percentage of the estimate, or $30,200/5,478,100 = 0.6\%$. The SE for 1,091,200 was calculated previously as 12,100 which converted to an RSE is $12,100/1,091,200 = 1.1\%$. Applying the above formula, the RSE of the proportion is

$$RSE = \sqrt{(1.1)^2 - (0.6)^2} = 0.9\%$$

8 Therefore, the SE for the proportion of males who at February 2006 had been with their current employer/business for less than 12 months is 0.2 percentage points ($= (20/100) \times 0.9$). Therefore, there are about two chances in three that the proportion of males who had been with their current employer/business for less than 12 months is between 19.7% and 20.1% and 19 chances in 20 that the proportion is within the range 19.5% to 20.3%.

DIFFERENCES

9 Published estimates may also be used to calculate the difference between two survey estimates (of numbers or percentages). Such an estimate is subject to sampling error. The sampling error of the difference between two estimates depends on their SEs and the relationship (correlation) between them. An approximate SE of the difference between two estimates (x-y) may be calculated by the following formula:

$$SE(x-y) = \sqrt{[SE(x)]^2 + [SE(y)]^2}$$

10 While this formula will only be exact for differences between separate and uncorrelated characteristics or subpopulations, it is expected to provide a good approximation for all differences likely to be of interest in this publication.

TECHNICAL NOTE DATA QUALITY *continued*

STANDARD ERRORS

T1 STANDARD ERRORS OF ESTIMATES

Size of estimate (persons)	NSW no.	Vic. no.	Qld no.	SA no.	WA no.	Tas. no.	NT no.	ACT no.	AUST.	
									SE no.	RSE %
100	290	250	250	150	160	100	90	140	100	100.0
200	380	330	330	210	220	140	150	180	180	90.0
300	440	390	390	250	260	180	190	200	240	80.0
500	540	470	470	300	330	220	250	230	350	70.0
700	620	540	540	350	380	260	300	260	430	61.4
1000	710	620	610	400	440	300	350	280	540	54.0
1500	830	730	710	470	520	340	420	320	690	46.0
2000	920	810	790	530	590	370	460	340	820	41.0
2500	1 000	900	850	550	650	400	500	350	900	36.0
3000	1 100	950	900	600	700	400	550	400	1 000	33.3
3500	1 150	1 000	950	650	750	450	550	400	1 100	31.4
4000	1 200	1 050	1 000	700	750	450	600	400	1 200	30.0
5000	1 300	1 150	1 100	750	850	500	650	450	1 300	26.0
7000	1 500	1 300	1 250	850	950	550	750	500	1 550	22.1
10000	1 700	1 500	1 400	950	1 100	650	950	600	1 800	18.0
15000	2 000	1 750	1 600	1 100	1 250	800	1 300	750	2 100	14.0
20000	2 200	1 950	1 800	1 200	1 400	950	1 600	850	2 300	11.5
30000	2 600	2 300	2 050	1 450	1 600	1 250	2 200	1 100	2 650	8.8
40000	2 850	2 550	2 250	1 700	1 750	1 500	2 750	1 350	2 900	7.3
50000	3 100	2 800	2 450	1 900	1 950	1 750	3 300	1 500	3 100	6.2
100000	4 050	3 600	3 400	2 900	3 050	2 600	5 850	2 050	4 000	4.0
150000	4 800	4 350	4 250	3 700	4 100	3 200	8 350	2 350	4 700	3.1
200000	5 550	5 200	5 100	4 400	4 950	3 650	10 750	2 450	5 300	2.7
300000	7 100	6 800	6 800	5 450	6 250	4 300	15 550	2 550	6 350	2.1
500000	9 950	9 300	9 550	6 900	7 950	5 150	8 100	1.6
1000000	14 950	13 700	13 500	9 000	10 050	6 250	11 600	1.2
2000000	21 350	19 350	16 550	11 000	11 400	17 150	0.9
5000000	31 500	28 550	17 350	13 000	11 500	29 250	0.6
10000000	39 750	36 450	15 250	39 200	0.4
15000000	44 050	0.3

.. not applicable

T2 LEVELS AT WHICH ESTIMATES HAVE RELATIVE STANDARD ERRORS OF 25% AND 50% (a)

	NSW	Vic.	Qld	SA	WA	Tas.	NT	ACT	Aust.
	no.	no.	no.	no.	no.	no.	no.	no.	no.
RSE of 25%	5 400	4 400	4 100	2 200	2 600	1 300	1 800	1 200	5 500
RSE of 50%	1 800	1 400	1 400	700	800	400	500	400	1 200

(a) Refers to the number of people contributing to the estimate.

GLOSSARY

Ceased a job	<p>Left a job voluntarily or lost a job involuntarily. Leaving a job voluntarily includes leaving a job because:</p> <ul style="list-style-type: none">■ of unsatisfactory work arrangements/pay/hours; or■ the job was seasonal, temporary or a holiday job and they left that job to return to studies; or■ they retired, started a new business, got a better job, or left for family or other reasons. <p>Losing a job involuntarily includes leaving a job because:</p> <ul style="list-style-type: none">■ they were retrenched or their business closed down because of financial difficulties; or■ the job was seasonal, temporary or a holiday job and they did not leave that job to return to studies; or■ they left their job because of their own ill health or injury.
Change in employer/business	People who were employed at February 2006 and, within the 12 months to February 2006, ceased working with one employer/business and started working with another employer/business in relation to their main job.
Change in employment type	Any change in employment type in relation to main job.
Change in industry	Any change between industry Divisions as classified by the <i>Australian and New Zealand Standard Industrial Classification (ANZSIC), 1993</i> (cat. no. 1292.0).
Change in occupation	Any change between Major occupation groups as classified by the <i>Australian Standard Classification of Occupations, Second Edition (ASCO), 1997</i> (cat. no. 1220.0).
Change in usual hours	Any change in the number of usual hours worked in relation to main job.
Change in work	Employees (excluding owner managers of incorporated enterprises) were considered to have had some change in work if they had been with their current employer for one year or more at February 2006 and, in the 12 months to February 2006, had:
Contributing family workers	People who work without pay, in an economic enterprise operated by a relative.
Current employer/business	Refers to the employer/business which the person had in the week before the interview. Where the person had more than one employer/business the employer/business for which most hours were usually worked, was regarded as the current employer/business.
Different employment type	See 'Change in employment type'.
Different industry	See 'Change in industry'.
Different occupation	See 'Change in occupation'.
Different usual hours worked	See 'Change in usual hours'.
Duration of last job	The period from the commencement of the last job up to the time the person ceased working in that job.
Duration with current employer/business	The period between the commencement with the current employer/business and the week before the interview.
Duration with employer/business at February 2006	See 'Duration with current employer/business'.

GLOSSARY *continued*

Employed	People aged 15 years and over who, during the reference week: <ul style="list-style-type: none">■ worked for one hour or more for pay, profit, commission or payment in kind, in a job or business or on a farm (comprising employees, employers and own account workers); or■ worked for one hour or more without pay in a family business or on a farm (i.e. contributing family workers); or■ were employees who had a job but were not at work and were:<ul style="list-style-type: none">■ away from work for less than four weeks up to the end of the reference week; or■ away from work for more than four weeks up to the end of the reference week and received pay for some or all of the four week period to the end of the reference week; or■ away from work as a standard work or shift arrangement; or■ on strike or locked out; or■ on workers' compensation and expected to return to their job; or■ were employers or own account workers who had a job, business or farm, but were not at work.
Employees	People who work for a public or private employer and receive remuneration in wages, salary, a retainer fee from their employer while working on a commission basis, tips, piece rates, or payment in kind, or people who operate their own incorporated enterprise with or without hiring employees.
Employer/business at February 2006	See 'Current employer/business'.
Employers	People who operate their own unincorporated economic enterprise or engage independently in a profession or trade, and hire one or more employees.
Employment type	Classifies employed people according to the following categories on the basis of their main job (that is, the job in which they usually worked the most hours): <ul style="list-style-type: none">■ Employees (excluding owner managers of incorporated enterprises)<ul style="list-style-type: none">■ with paid leave entitlements■ without paid leave entitlements■ Owner managers of incorporated enterprises■ Owner managers of unincorporated enterprises■ Contributing family workers.
Industry	All occurrences of industry in this publication refer to Division, as classified by the <i>Australian and New Zealand Standard Industrial Classification (ANZSIC), 1993</i> (cat. no. 1292.0).
Job leavers	People who ceased a job voluntarily, because: <ul style="list-style-type: none">■ of unsatisfactory work arrangements/pay/hours; or■ the job was seasonal, temporary or a holiday job and they left that job to return to studies; or■ they retired, started a new business, got a better job, left for family reasons.
Job losers	People who ceased a job involuntarily, because: <ul style="list-style-type: none">■ they were retrenched or their business closed down because of financial difficulties; or■ the job was seasonal, temporary or a holiday job and they did not leave that job to return to studies; or■ they left their job because of their own ill health or injury.
Last job	The last job in which employment ceased during the reference period.
Level of highest educational attainment	Level of highest educational attainment identifies the highest achievement a person has attained in any area of study. It is not a measurement of the relative importance of different fields of study but a ranking of qualifications and other educational attainments regardless of the particular area of study or the type of institution in which the study was undertaken.

GLOSSARY *continued*

Level of highest non-school qualification	Non-school qualifications are awarded for educational attainments other than those of pre-primary, primary or secondary education. They include qualifications at the Postgraduate Degree level, Master Degree level, Graduate Diploma and Graduate Certificate level, Bachelor Degree level, Advanced Diploma and Diploma level, and Certificates I, II, III and IV levels. Non-school qualifications may be attained concurrently with school qualifications.
Main English-speaking countries	The United Kingdom, Ireland, South Africa, Canada, the United States of America and New Zealand.
Main job	The job in which the most hours were usually worked.
Not employed	People who were either 'unemployed' or 'not in the labour force' as defined.
Not in the labour force	People who were not in the categories 'employed' or 'unemployed' as defined.
Not working at February 2006	See 'Not Employed'.
Occupation	All occurrences of occupation in this publication relate to Major Group as defined by the <i>Australian Standard Classification of Occupations, Second Edition (ASCO), 1997</i> (cat. no. 1220.0).
Own account workers	People who operated their own unincorporated economic enterprise or engaged independently in a profession or trade, and hired no employees.
Owner managers	People who worked in their own incorporated or unincorporated enterprise.
Owner managers of incorporated enterprises	People who worked in their own incorporated enterprise, that is, a business entity which is registered as a separate legal entity to its members or owners (also known as a limited liability company). These people are classified as employees under 'status in employment'.
Owner managers of unincorporated enterprises	People who operated their own unincorporated enterprise, that is, a business entity in which the owner and the business are legally inseparable, so that the owner is liable for any business debts that are incurred. Includes those engaged independently in a trade or profession. These people are classified as employers under 'status in employment' if their business has employees, or own account workers if it does not.
Previous job	See 'Last job'.
Promoted	A permanent increase in wage or salary and an increase in responsibility or complexity of work. Temporary promotions, acting and temporary higher duties are excluded.
Reference period	The 52 weeks up to the end of the week prior to interview.
Reference week	The week preceding the week in which the interview was conducted.
Retrenched	People who ceased their last job because they were either: <ul style="list-style-type: none"> ■ employees who were laid off, including no work available, made redundant, employer went out of business or dismissed; and ■ self employed people whose business closed down for economic reasons, including 'went broke', liquidated, no work, or no supply or demand.
Status in employment	Employed people classified by whether they were employees, employers, own account workers, or contributing family workers.
Transferred	A change of position without a change in either the level of responsibility or wages or salary. Both employer-initiated and employee-initiated transfers are included.
Unemployed	People aged 15 years and over who were not employed during the reference week, and: <ul style="list-style-type: none"> ■ had actively looked for full-time or part-time work at any time in the four weeks up to the end of the reference week and were available for work in the reference week, or ■ were waiting to start a new job within four weeks from the end of the reference week, and could have started in the reference week if the job had been available then.
Usual hours worked	The number of hours usually worked.

GLOSSARY *continued*

With paid leave entitlements	Employees (excluding OMIEs), who were entitled to both paid sick leave and paid holiday leave; or were entitled to either paid sick leave or paid holiday leave (but not both). People employed in their own business or who were contributing family workers were not asked about their paid leave entitlements.
Without paid leave entitlements	Employees (excluding OMIEs), who were entitled to neither paid sick leave nor paid holiday leave.
Worked at some time during the year ending February 2006	For practical reasons it was not possible to include all of the questions from the Labour Force survey for previous periods. People who were either currently employed, or reported having worked for an employer or in their own business at some time in the previous year, were defined as having worked at some time during the year ending February 2006.
Working at February 2005	For practical reasons it was not possible to include all of the questions from the Labour Force survey for previous periods. Therefore, people who reported that they had a job or business one year ago were defined as working at February 2005.
Working at February 2006	See 'Employed'.

FOR MORE INFORMATION . . .

INTERNET **www.abs.gov.au** the ABS website is the best place for data from our publications and information about the ABS.

LIBRARY A range of ABS publications are available from public and tertiary libraries Australia wide. Contact your nearest library to determine whether it has the ABS statistics you require, or visit our website for a list of libraries.

INFORMATION AND REFERRAL SERVICE

Our consultants can help you access the full range of information published by the ABS that is available free of charge from our website, or purchase a hard copy publication. Information tailored to your needs can also be requested as a 'user pays' service. Specialists are on hand to help you with analytical or methodological advice.

- PHONE* 1300 135 070
- EMAIL* client.services@abs.gov.au
- FAX* 1300 135 211
- POST* Client Services, ABS, GPO Box 796, Sydney NSW 2001

FREE ACCESS TO STATISTICS

All statistics on the ABS website can be downloaded free of charge.

WEB ADDRESS www.abs.gov.au



2620900014068
ISBN 9780642483843

RRP \$29.00

